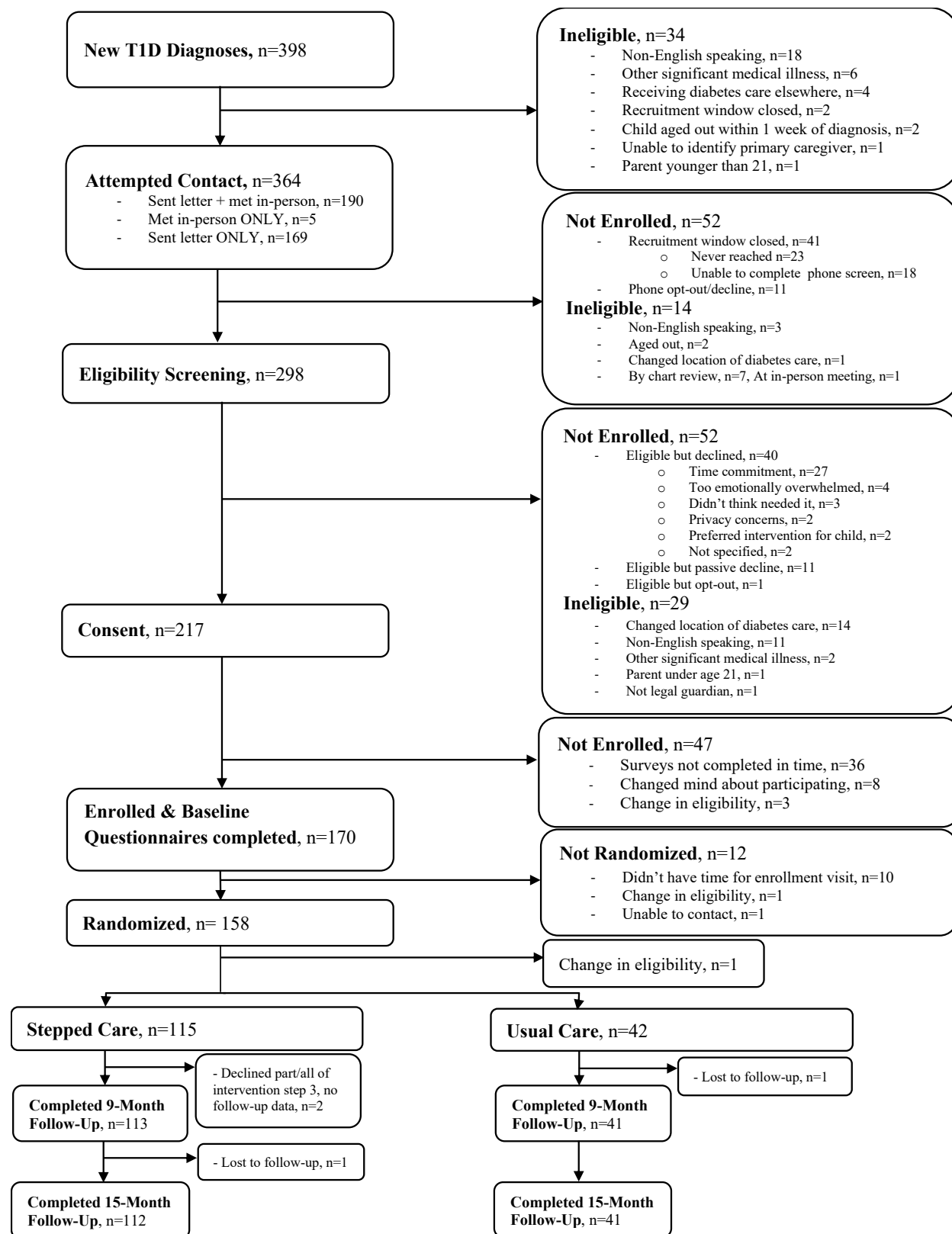
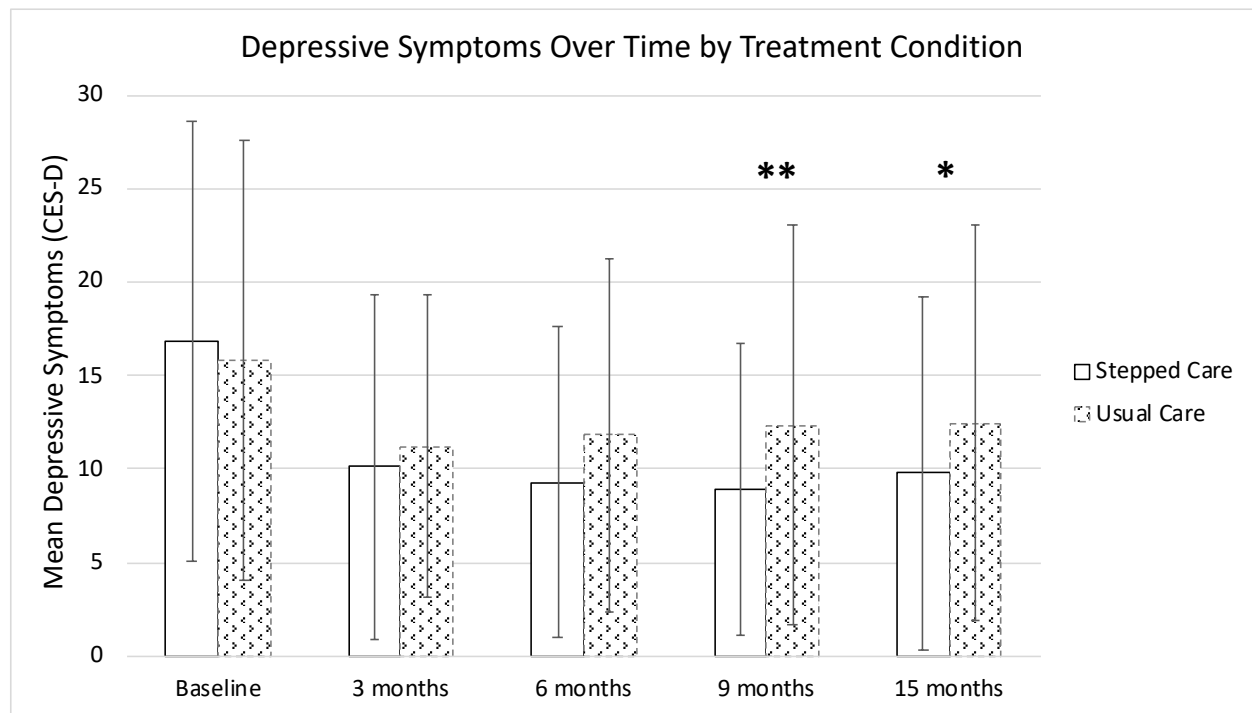


Supplemental online materials 1. *CONSORT Flowchart of First STEPS Recruitment*

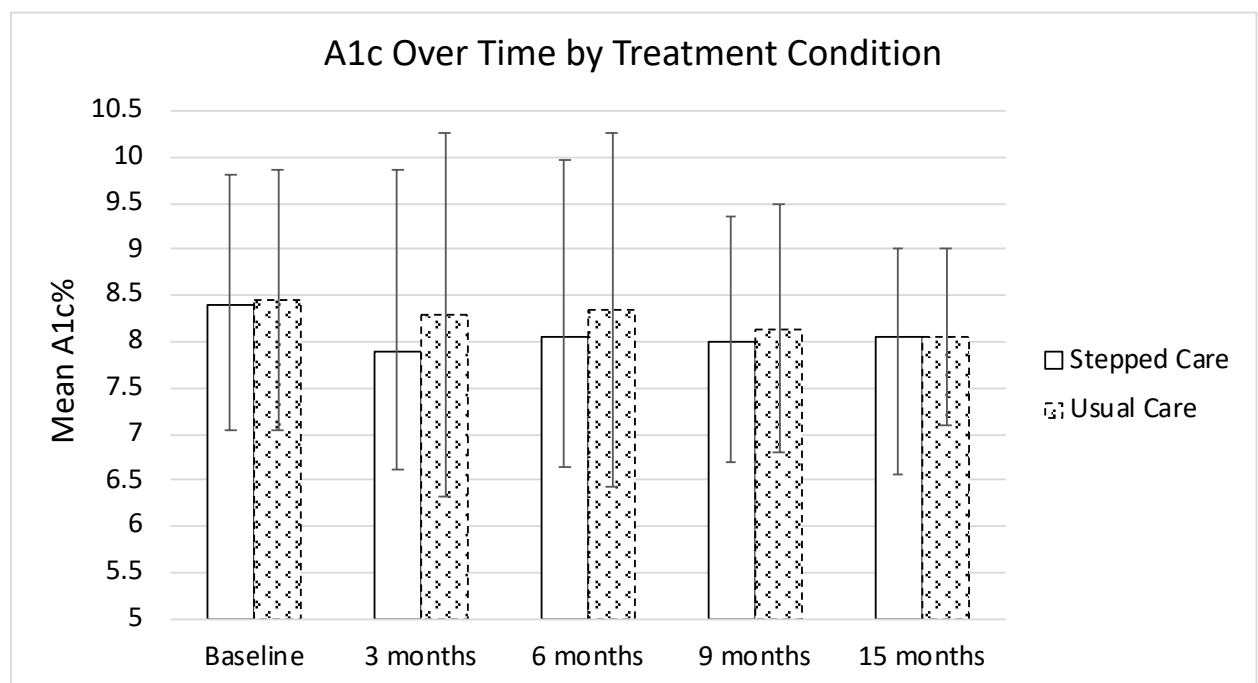


Supplemental Online Materials 2. M \pm SD over time by group: (A) CES-D scores, (B) HbA1c.

A.



B.



Note: Between-groups significant differences indicated by ** $p < 0.001$; * $p < .05$. Both groups also improved significantly from baseline to 15 months.

Supplemental Online Materials 3. Percent of parent CES-D scores (M±SD) exceeding clinical cutoff (>16) at each time point, by study arm.

	Baseline	3 months	6 months	9 months	15 months
Stepped Care	49.1%	17.5%	20.5%	20.4%	20.5%
Usual Care	41.5%	27.5%	36.5%	26.8%	29.3%
χ^2	.43	1.25	3.32	.41	.85
p	0.51	0.26	0.07	0.52	0.37

APPENDIX

Participating Investigators

Children's National Hospital: Randi Streisand (PI), John Barber, Jim Bost, Lauren Clary, Fran Cogen, Celia Henderson, Tom Hildebrandt, Juliana Jacangelo, Maureen Monaghan, Jessica Parrish, KellyAnn Rooney, Caitlin Shneider, Manuela Sinisterra, Rachel Sweenie, Carrie Tully, Christine Wang, Jichuan Wang. **Texas Children's Hospital:** Marisa Hilliard (Site PI), Barbara Anderson, Ashley Butler, Kylie DeLaO, Kelly Fegan-Bohm, Katie Gallagher, Caroline Gonynor, Jasmine Jones, Lefke Karaviti, Wendy Levy, Afshan Mohammad, Yuliana Rojas, Jamie Segovia.