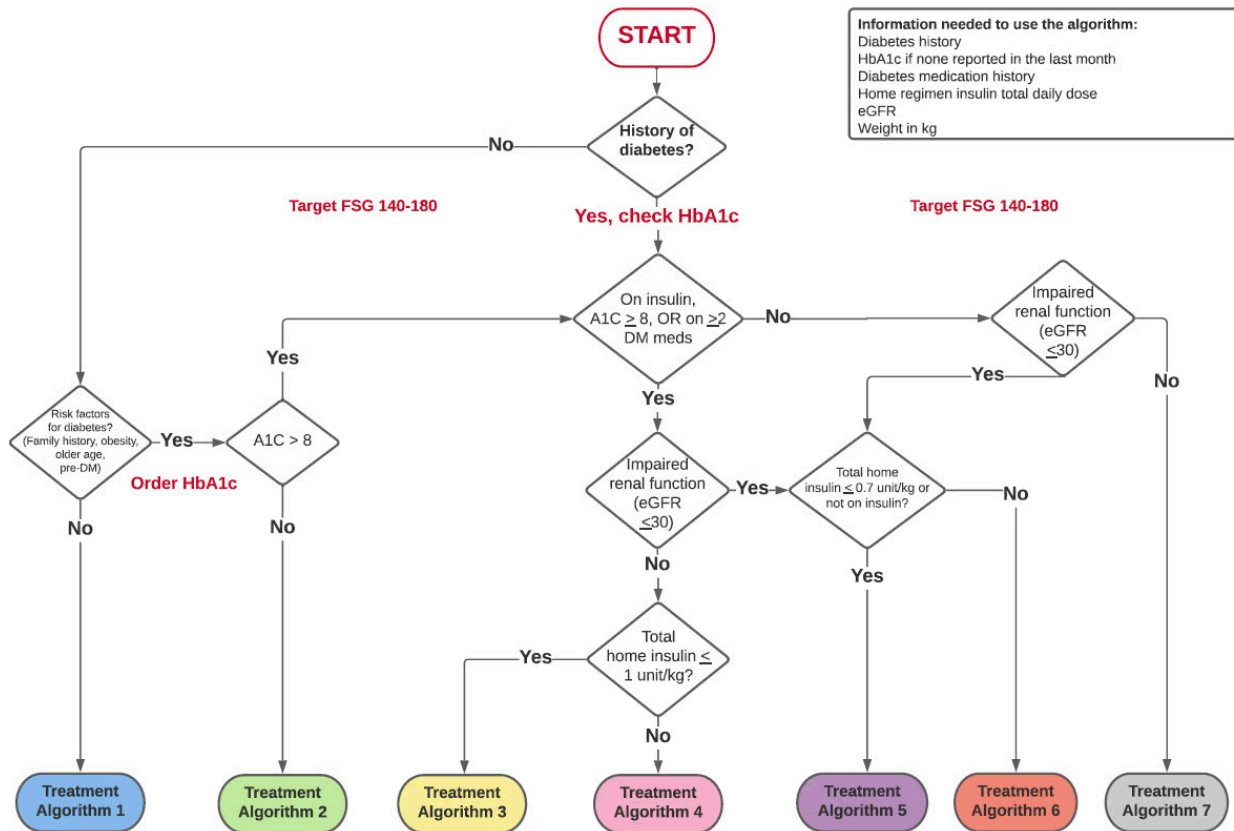
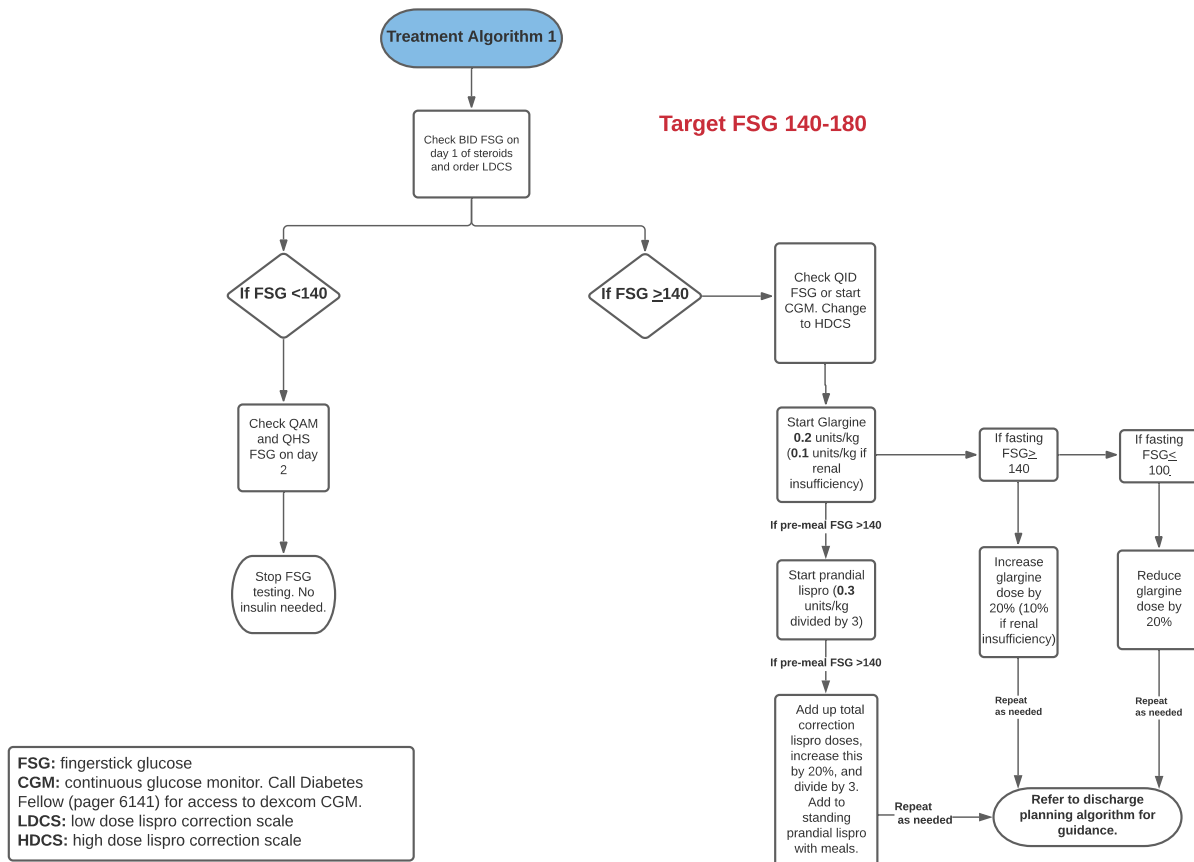


## Supplementary Materials

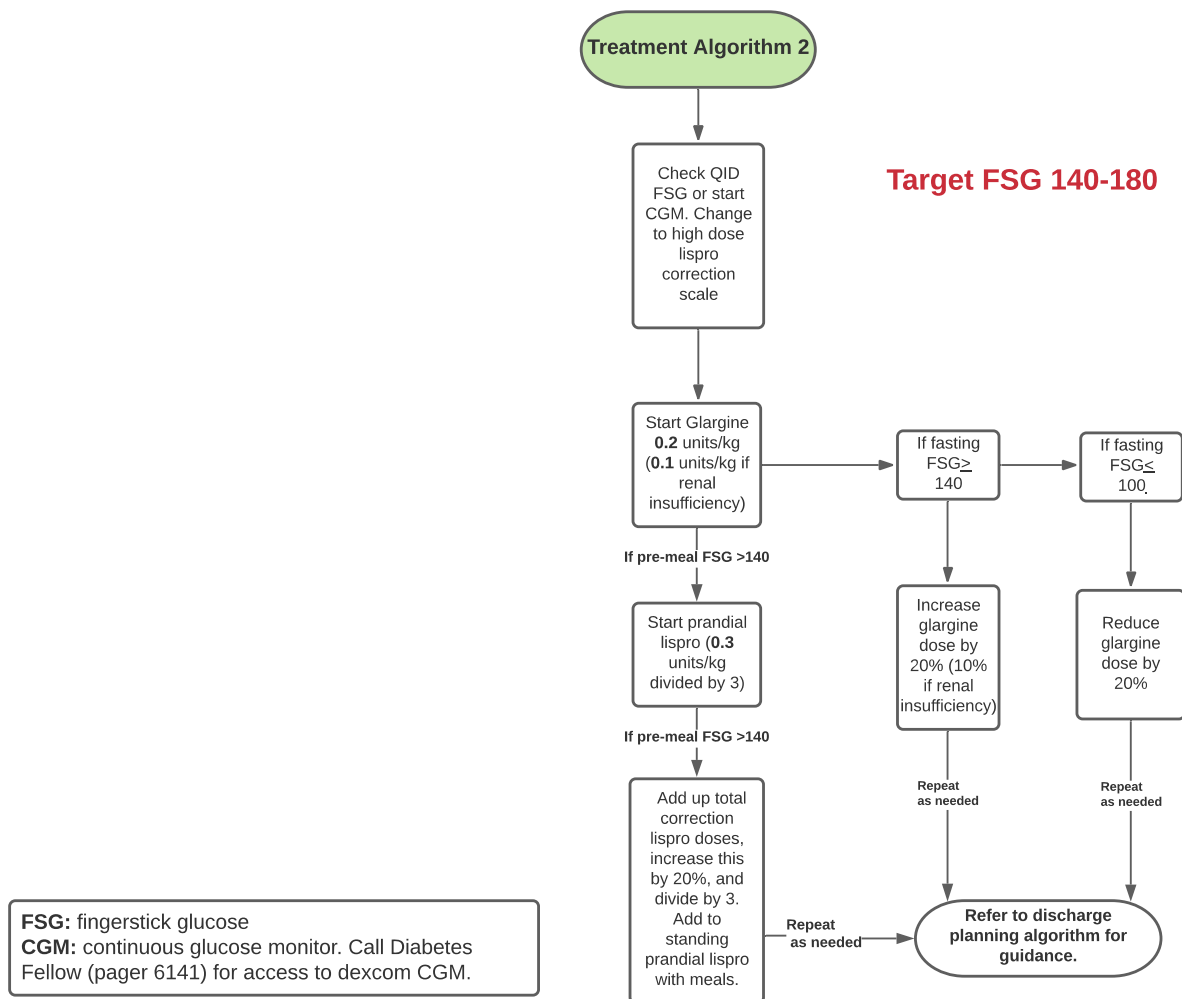


Supplementary Figure S1. Flowsheet for selecting appropriate treatment algorithm.

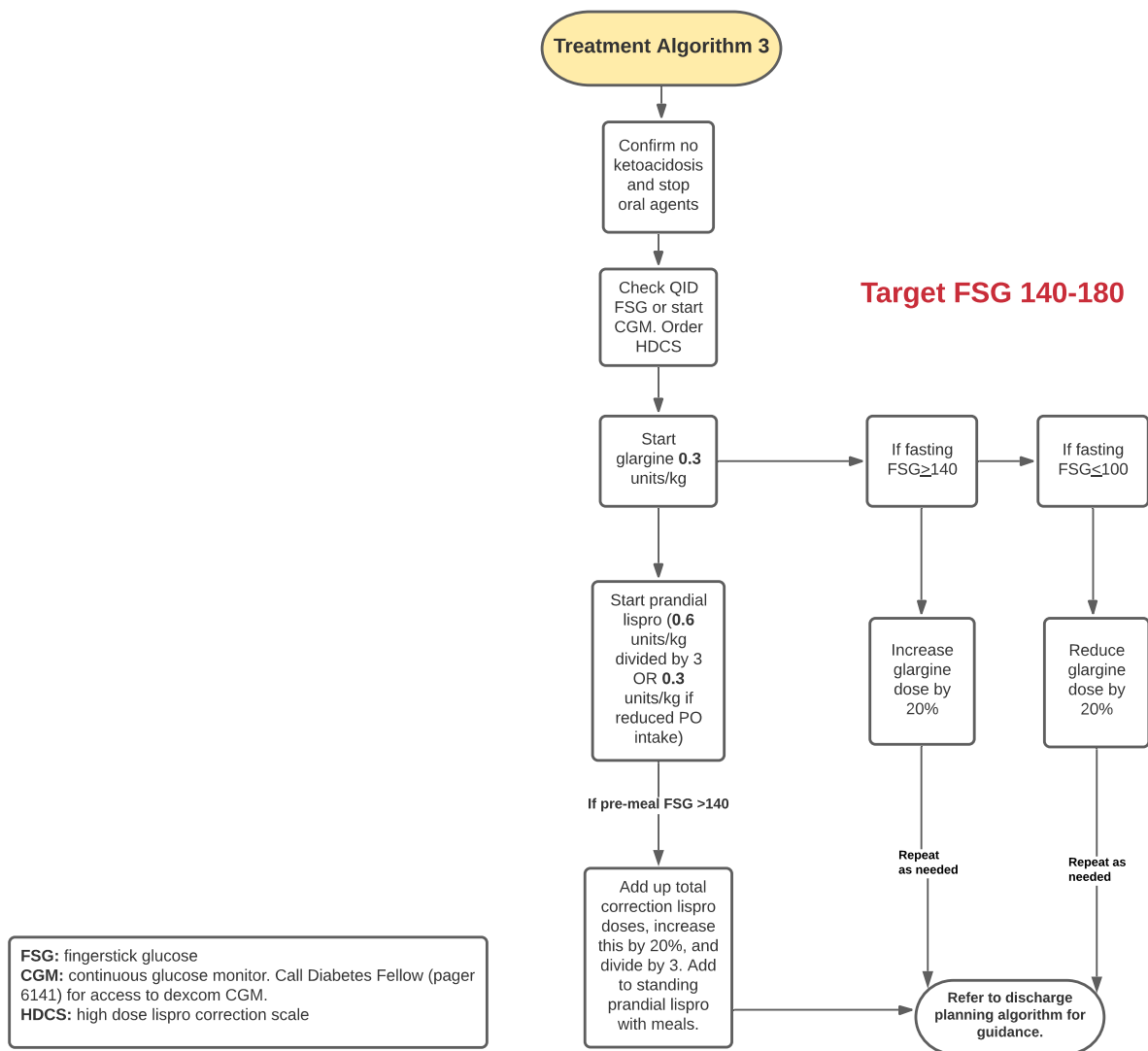
Pre-diabetes mellitus (pre-DM); Diabetes mellitus (DM); estimated glomerular filtration rate (eGFR).



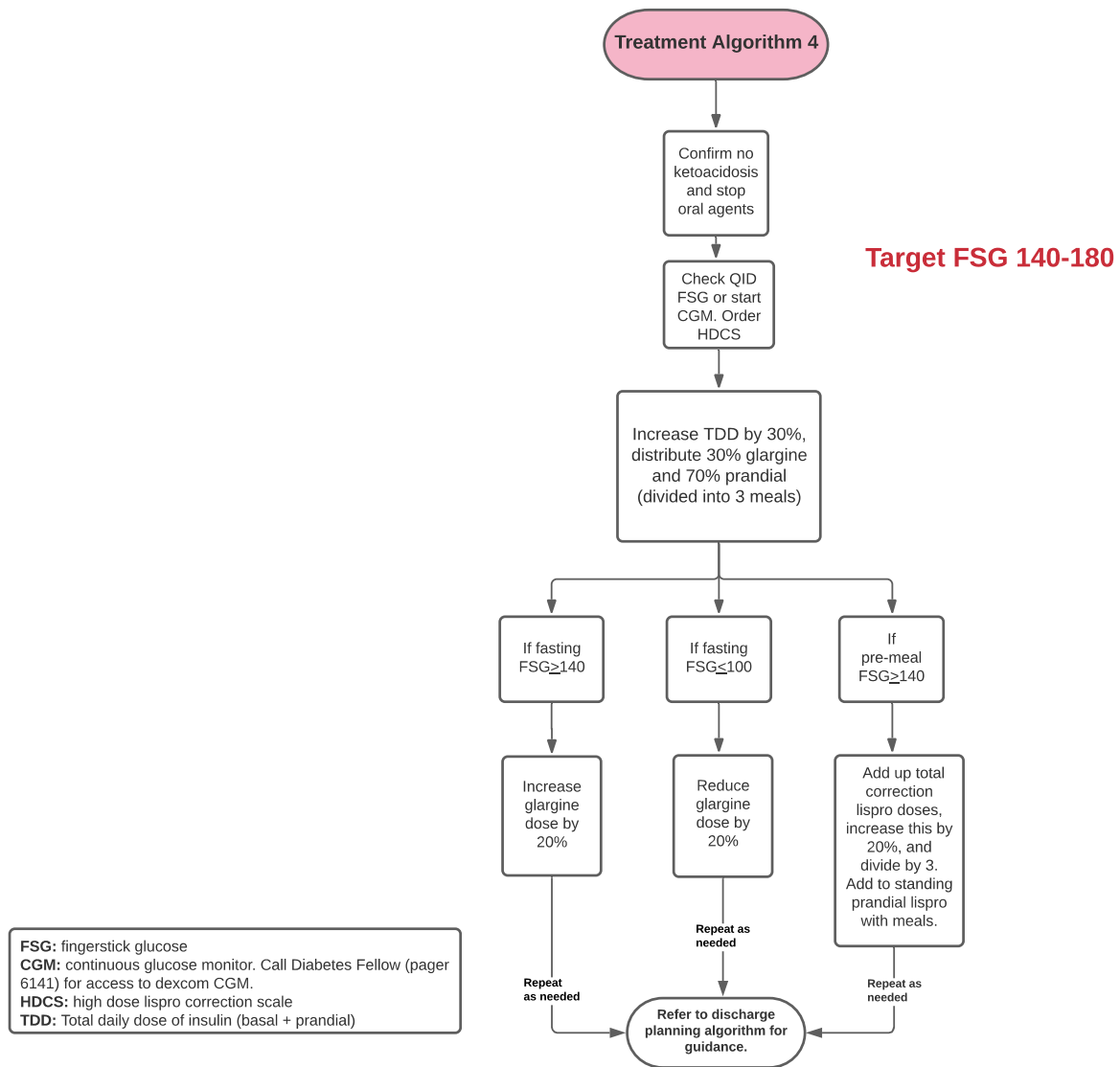
*Supplementary Figure S2. Treatment algorithm for patients without a history of diabetes and without risk factors for diabetes (family history, obesity, older age, prediabetes mellitus). Every morning (QAM); Every night before bedtime (QHS); Continuous glucose monitoring (CGM); Low dose lispro correction scale (LDCS); High dose lispro correction scale (HDCS).*



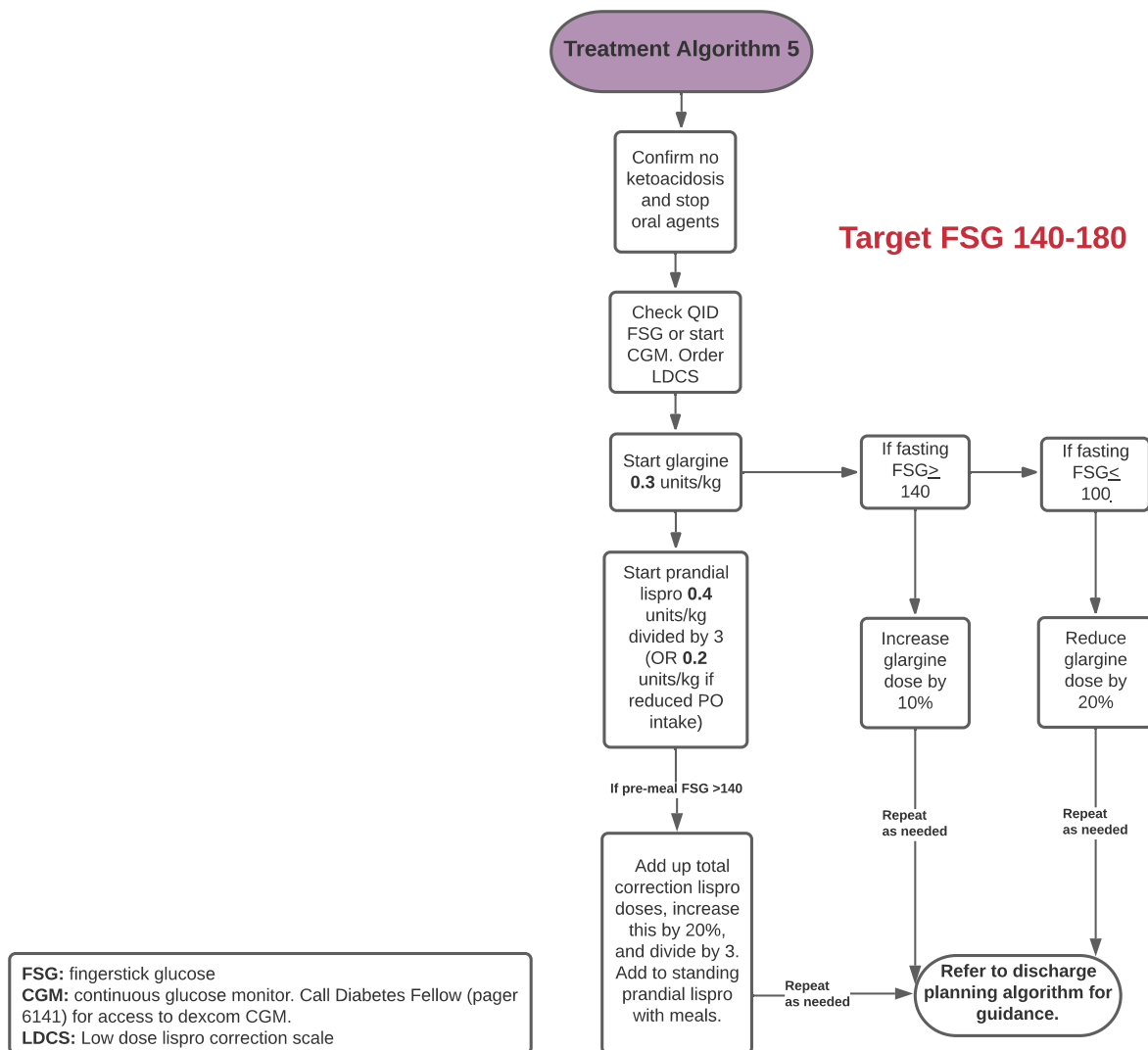
*Supplementary Figure S3. Treatment algorithm for patients without a history of diabetes and at least one risk factor for diabetes (family history, obesity, older age, pre diabetes) with an admission HbA1c>8%. Four time daily (QID).*



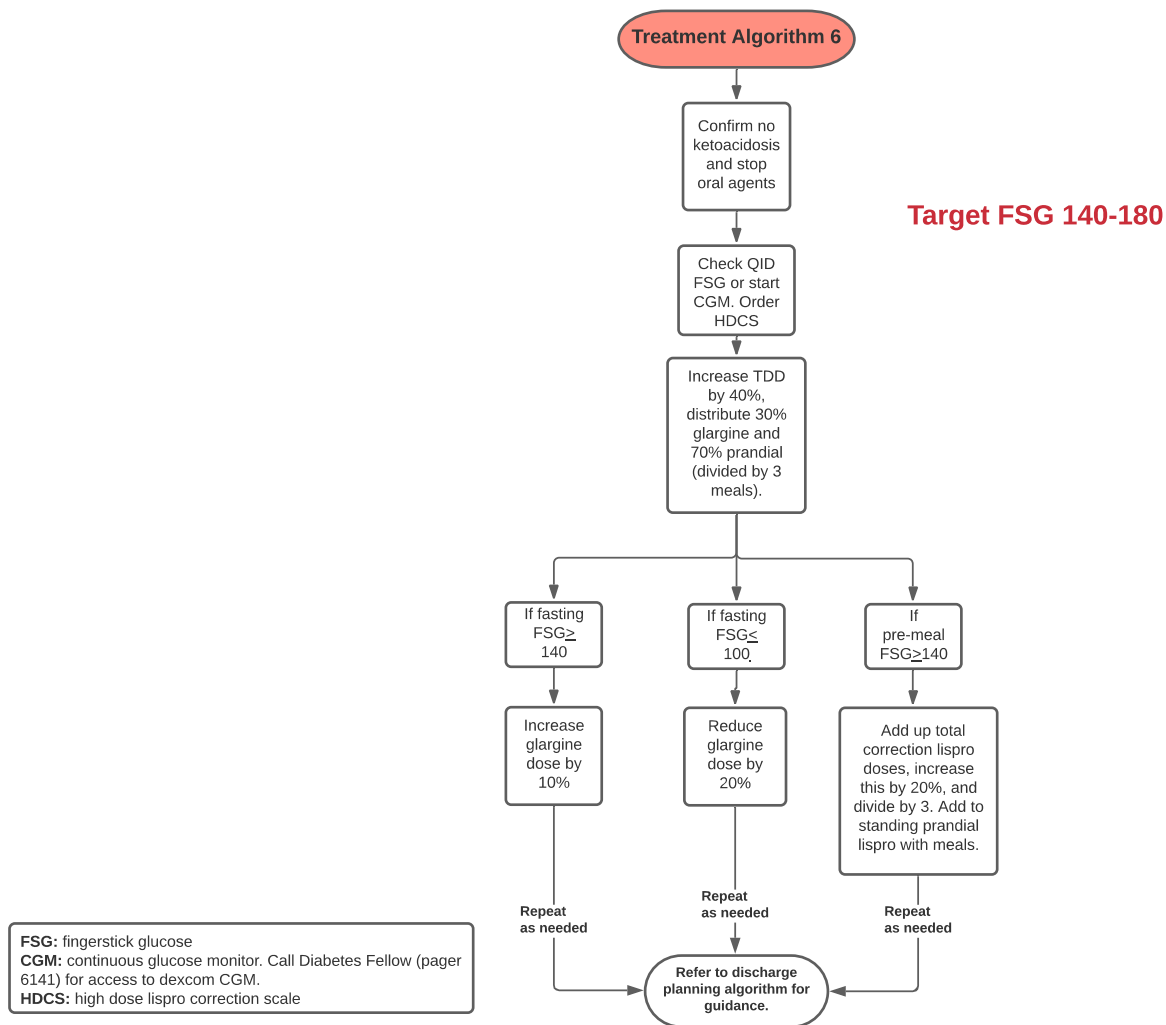
*Supplementary Figure S4. Treatment algorithm for patients with a history of diabetes and is either on insulin therapy, has an HbA1C  $\geq 8$ , or on  $\geq 2$  diabetes medications. Patient also has eGFR  $>30$  and is on total home insulin dose  $\leq 1$  unit/kg. By mouth (PO);*



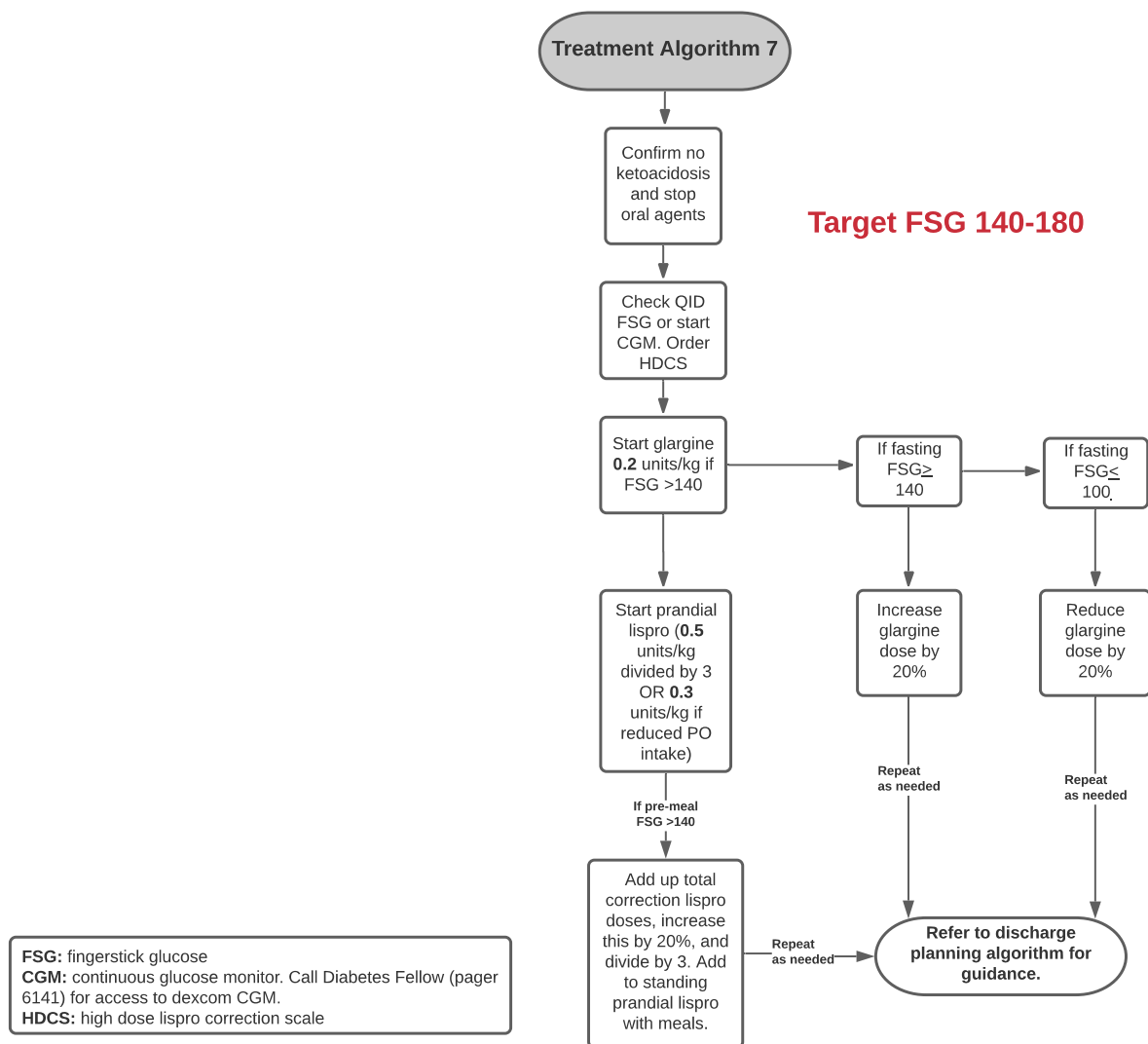
*Supplementary Figure S5. Treatment algorithm for patients with a history of diabetes and is either on insulin therapy, has an HbA1C $\geq 8$ , or on  $\geq 2$  diabetes medications. Patient also has eGFR $>30$  and is on total home insulin dose  $>1$  unit/kg.*



*Supplementary Figure S6. Treatment algorithm for patients with a history of diabetes and is either on insulin therapy, has an HbA1C  $\geq 8$ , or on  $\geq 2$  diabetes medications. Patient also has eGFR  $\leq 30$  and is on total home insulin dose  $\leq 0.7$  unit/kg or not on insulin therapy.*

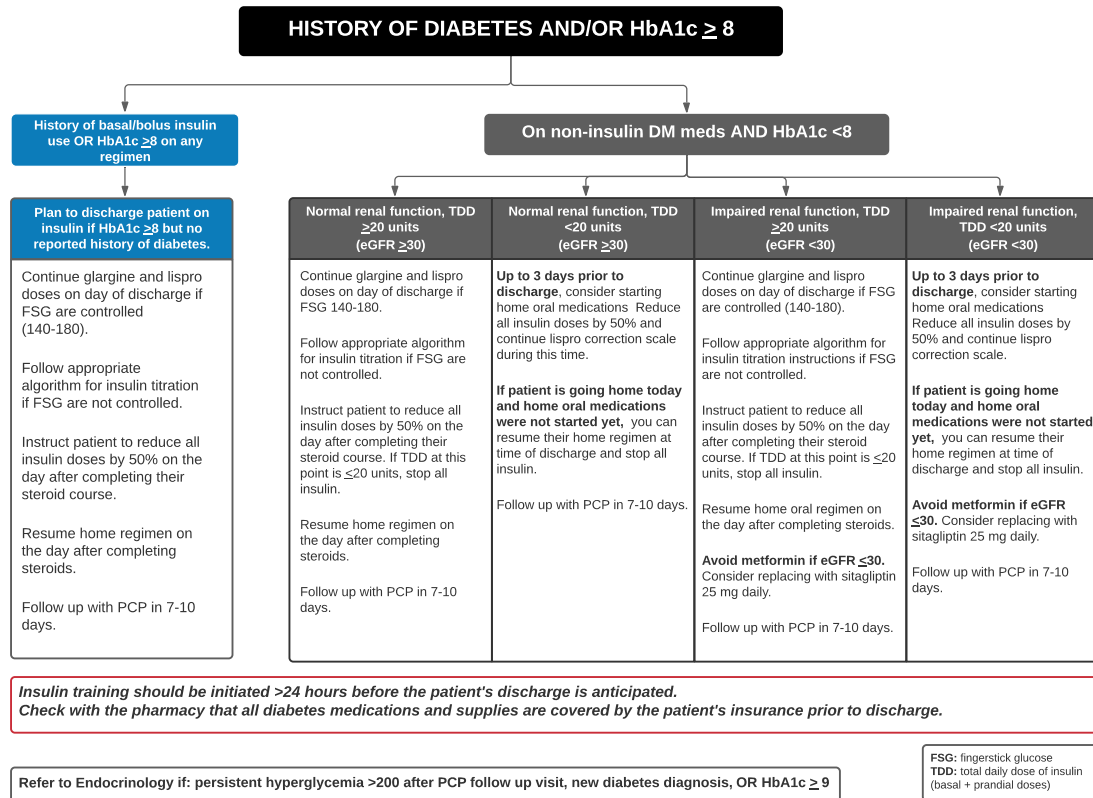


*Supplementary Figure S7. Treatment algorithm for patients with a history of diabetes and is either on insulin therapy, has an HbA1C  $\geq 8$ , or on  $\geq 2$  diabetes medications. Patient also has eGFR  $\leq 30$  and is on total home insulin dose  $>0.7$  unit/kg or on insulin therapy.*

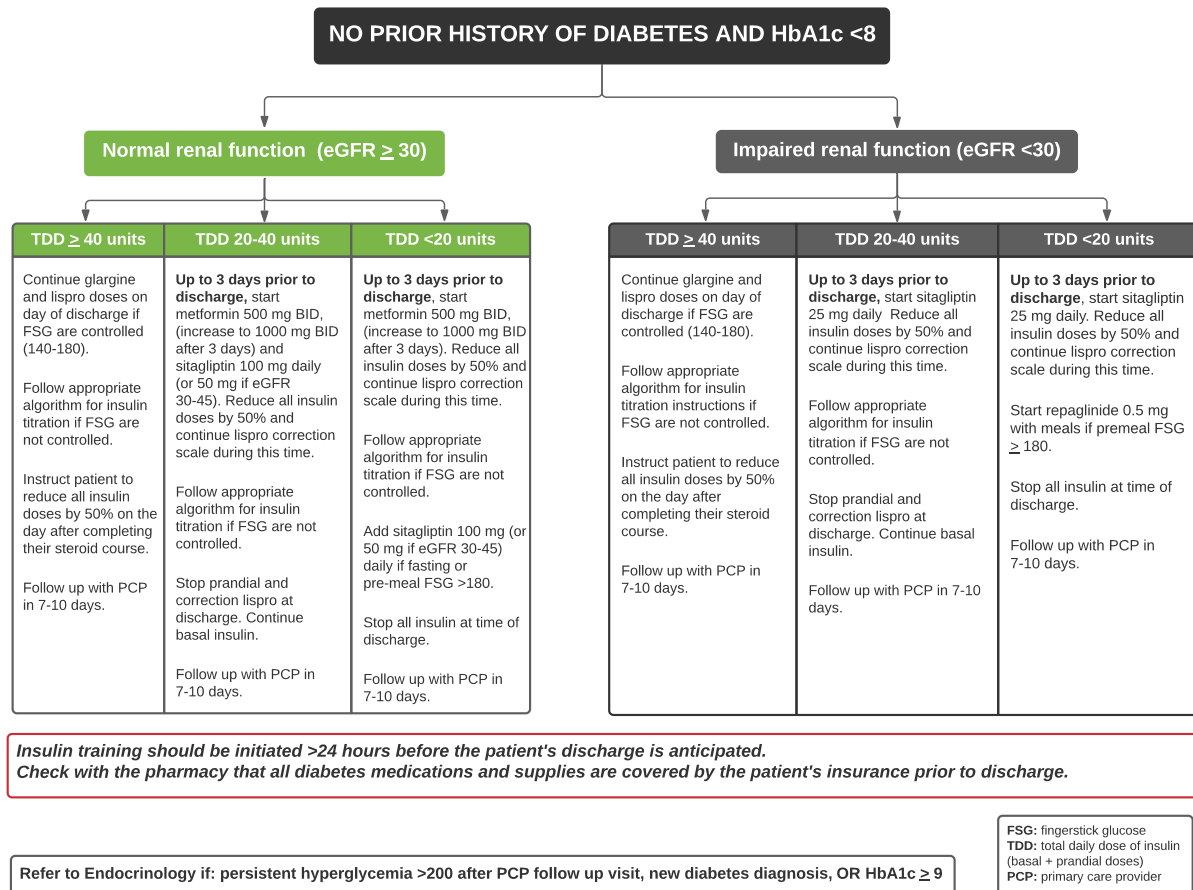


*Supplementary Figure S8. Treatment algorithm for patients with a history of diabetes and is not on insulin therapy, has an HbA1C<8% or on 1 or fewer DM medications with eGFR>30. Per mouth (PO).*





*Supplementary Figure S9. Discharge planning algorithm for patients with a history of diabetes and or HbA1C  $\geq 8\%$ .*



*Supplementary Figure S10. Discharge planning algorithm for patients with no prior history of diabetes and HbA1C <8%. Primary care provider (PCP).*