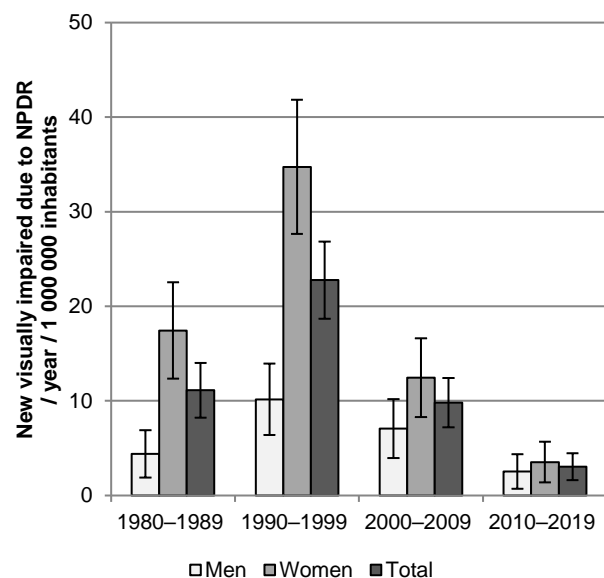
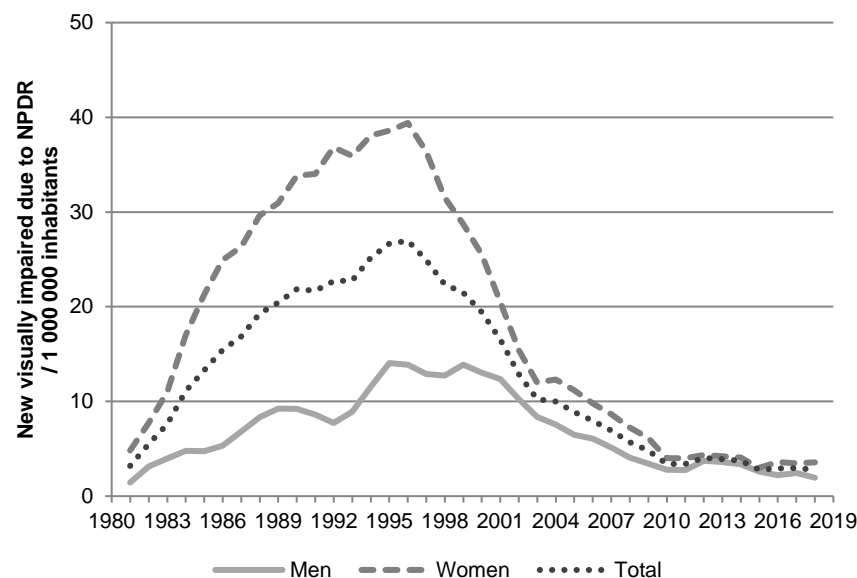
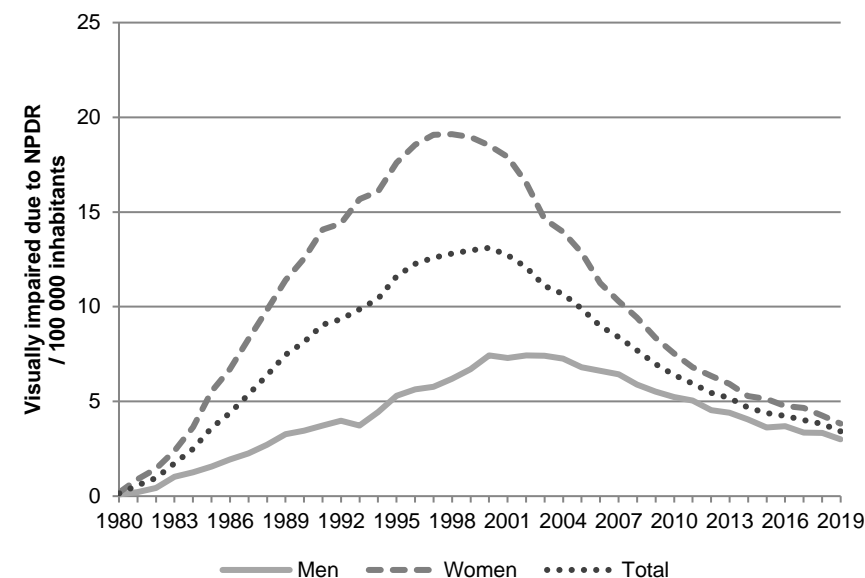
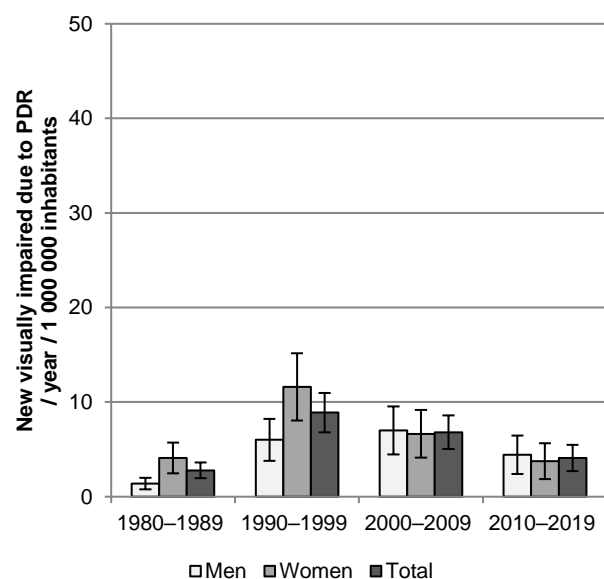
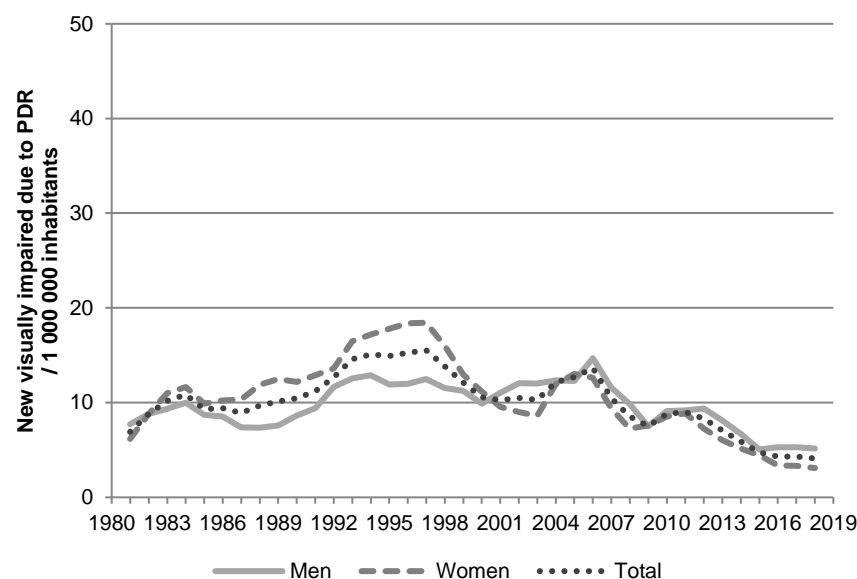
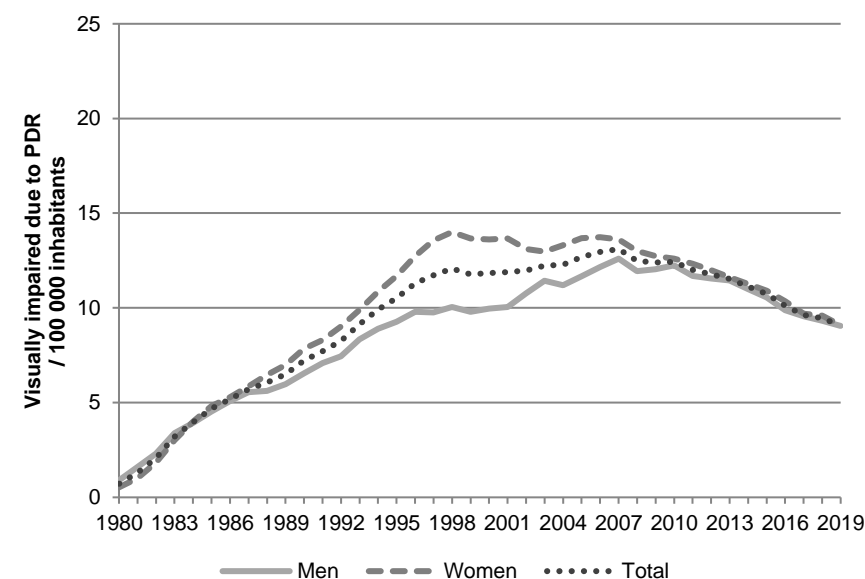
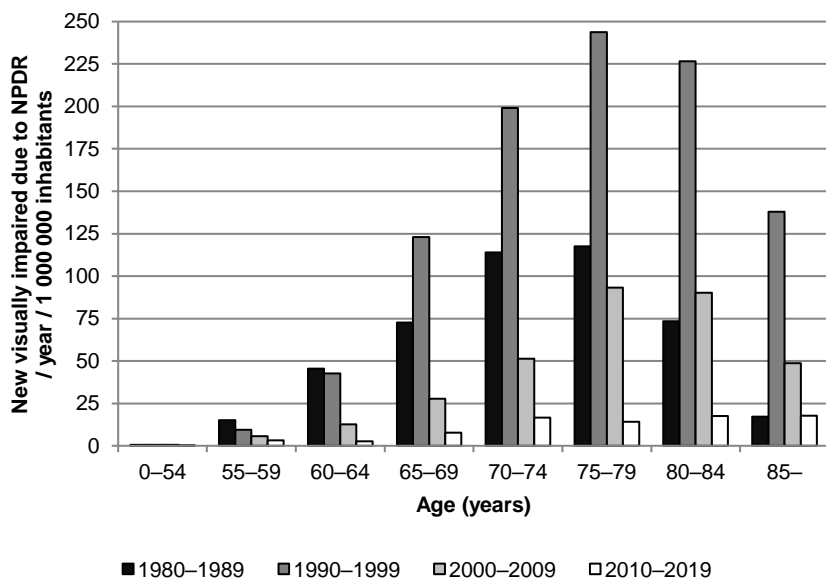
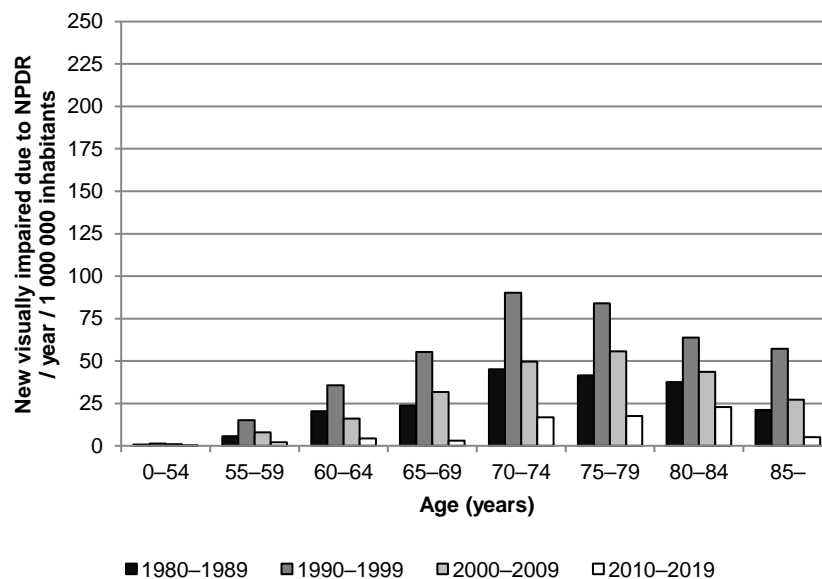
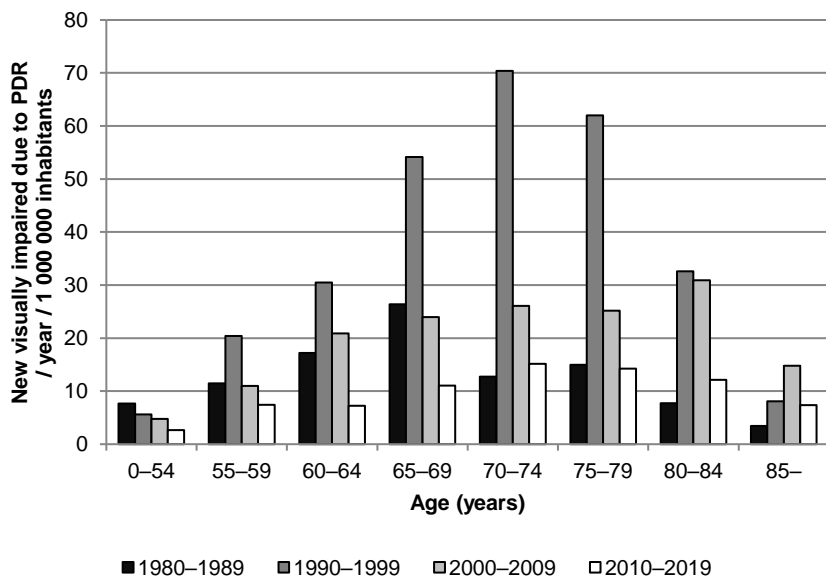
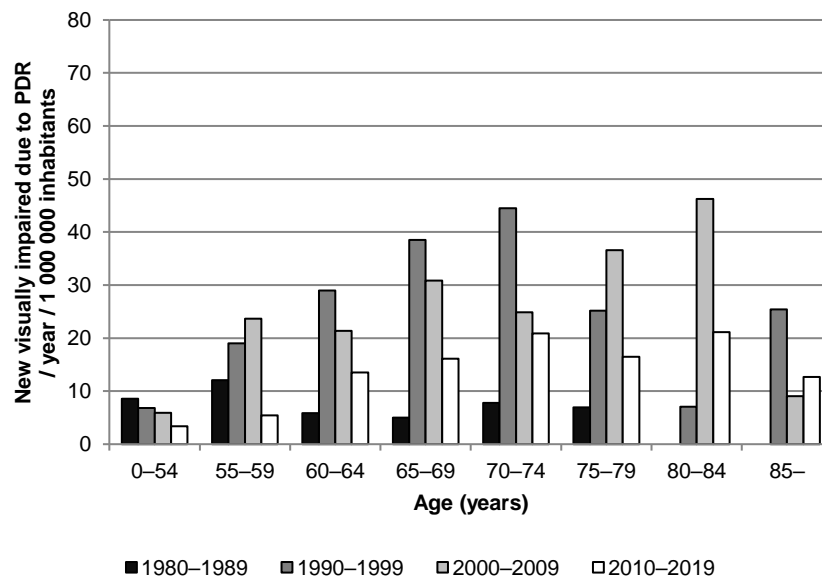


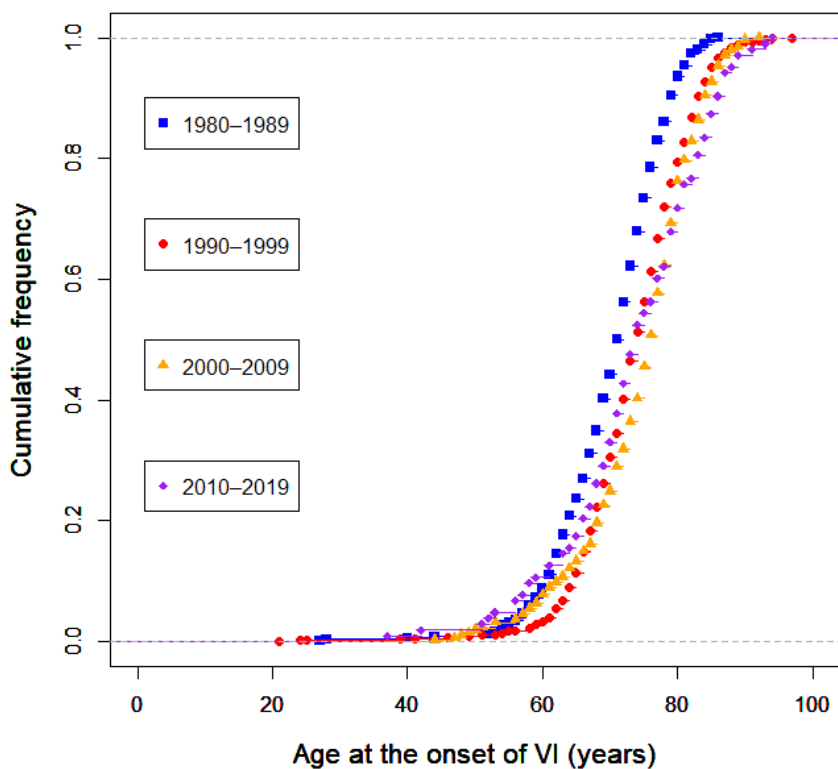
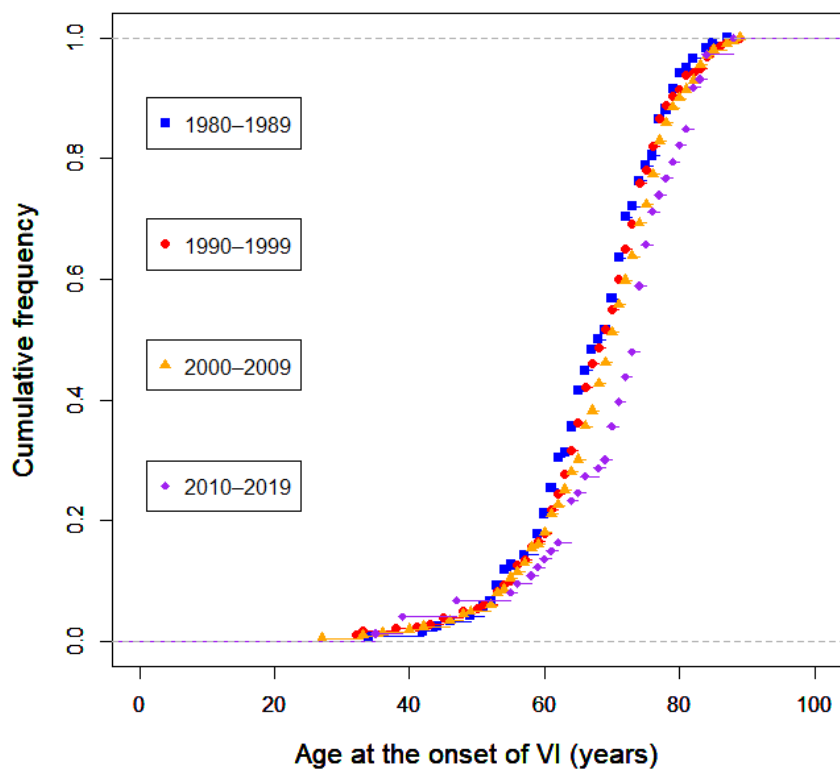
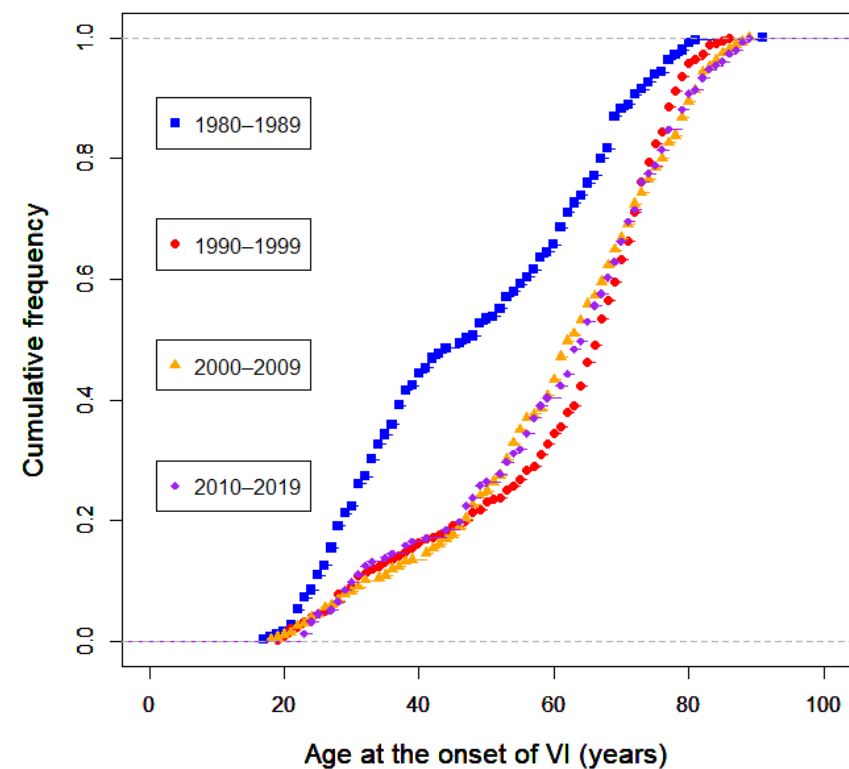
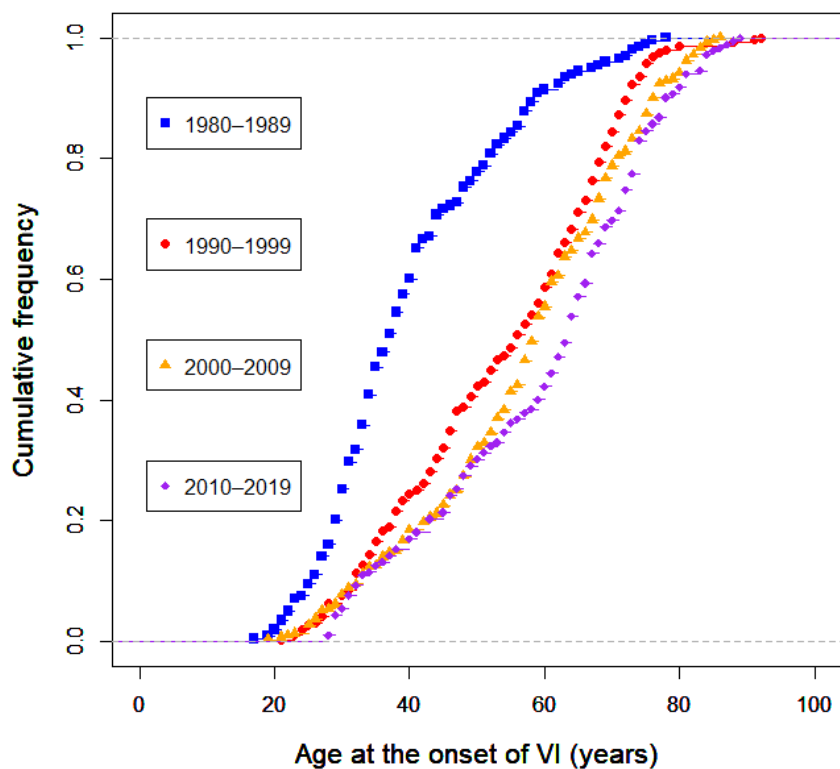
**A****B****C****D****E****F**

**Supplemental Figure S1—Reported visual impairment due to nonproliferative diabetic retinopathy (NPDR) and proliferative diabetic retinopathy (PDR) in total population during 1980–2019.**

A. Average annual incidence of reported visual impairment due to NPDR per decade adjusted for age and/or sex (with 95% confidence intervals). B. Annual incidence of reported visual impairment due to NPDR smoothed using a three-year central moving average. C. Annual prevalence of reported visual impairment due to NPDR. D. Average annual incidence of reported visual impairment due to PDR per decade adjusted for age and/or sex (with 95% confidence intervals). E. Annual incidence of reported visual impairment due to PDR smoothed using a three-year central moving average. F. Annual prevalence of reported visual impairment due to PDR.

**A****B****C****D**

**Supplemental Figure S2—Average annual incidence of reported visual impairment due to nonproliferative diabetic retinopathy (NPDR) and proliferative diabetic retinopathy (PDR) per decade in total population by age. A. NPDR, women. B. NPDR, men. C. PDR, women. D. PDR, men.**

**A****B****C****D**

**Supplemental Figure S3—Cumulative frequency of age at the onset of reported visual impairment (VI) due to nonproliferative diabetic retinopathy (NPDR) and proliferative diabetic retinopathy (PDR) by decade of onset. A. NPDR, women. B. NPDR, men. C. PDR, women. D. PDR, men.**

**Supplemental Table S1—Distribution of reported visual impairment due to nonproliferative diabetic retinopathy (NPDR) and proliferative diabetic retinopathy (PDR) by decade of onset**

	1980–1989	1990–1999	2000–2009	2010–2019	<i>P</i> (decade difference)
NPDR, women					
Mild visual impairment	70.5%	74.5%	84.3%	87.0%	0.29
Moderate visual impairment	18.3%	16.3%	11.8%	9.0%	0.060
Severe visual impairment	10.3%	6.3%	3.6%	4.0%	0.004
Near total blindness	0.9%	2.7%	0.3%	0%	0.005
Total blindness	0%	0.2%	0%	0%	1
NPDR, men					
Mild visual impairment	77.1%	76.8%	85.5%	83.8%	0.87
Moderate visual impairment	12.7%	15.2%	10.4%	14.7%	0.59
Severe visual impairment	7.6%	6.5%	2.6%	1.5%	0.09
Near total blindness	2.6%	1.5%	1.5%	0%	0.71
Total blindness	0%	0%	0%	0%	1
<i>P</i> (sex difference)	0.16	0.76	0.39	0.36	
PDR, women					
Mild visual impairment	42.5%	64.1%	66.0%	68.5%	0.009
Moderate visual impairment	16.3%	16.2%	19.7%	14.0%	0.64
Severe visual impairment	11.2%	9.4%	8.1%	7.7%	0.68
Near total blindness	16.2%	9.6%	5.4%	8.4%	0.004
Total blindness	13.8%	0.7%	0.8%	1.4%	< 0.001
PDR, men					
Mild visual impairment	46.4%	62.7%	69.5%	73.1%	0.035
Moderate visual impairment	12.9%	18.3%	14.7%	8.2%	0.066
Severe visual impairment	10.8%	6.4%	8.1%	11.1%	0.29
Near total blindness	20.6%	9.7%	6.7%	5.8%	< 0.001
Total blindness	9.3%	2.9%	1.0%	1.8%	< 0.001
<i>P</i> (sex difference)	0.39	0.15	0.61	0.35	

Statistical significance was calculated using Fisher's exact test.

**Supplemental Table S2—Mean age at the onset of reported visual impairment due to nonproliferative diabetic retinopathy (NPDR) and proliferative diabetic retinopathy (PDR) and age at death by decade of onset**

	1980–1989	1990–1999	2000–2009	2010–2019	<i>P</i> (1980s vs. 2010s)
<b>Age at onset VI, NPDR</b>					
Women, <i>n</i>	452	922	345	103	
Women, years (95% CI)	70.5 (69.8–71.2)	74.0 (73.5–74.5)	74.8 (73.9–75.7)	73.8 (71.8–75.9)	< 0.001
Men, <i>n</i>	118	278	199	73	
Men, years (95% CI)	67.4 (65.6–69.1)	67.8 (66.6–69.0)	68.8 (67.4–70.3)	71.0 (68.5–73.5)	0.009
<i>P</i> (sex difference)	0.001	< 0.001	< 0.001	0.15	
<b>Age at onset VI, PDR</b>					
Women, <i>n</i>	245	410	265	151	
Women, years (95% CI)	48.1 (45.8–50.4)	61.3 (59.7–62.9)	60.6 (58.5–62.6)	60.6 (57.8–63.4)	< 0.001
Men, <i>n</i>	198	283	292	182	
Men, years (95% CI)	40.2 (38.4–42.1)	53.9 (52.1–55.8)	57.0 (55.2–58.9)	59.7 (57.4–62.1)	< 0.001
<i>P</i> (sex difference)	< 0.001	< 0.001	0.004	0.52	
<b>Age at death, NPDR</b>					
Women, <i>n</i>	451	914	309	44	
Women, years (95% CI)	76.1 (75.4–76.8)	79.8 (79.3–80.3)	81.6 (80.7–82.5)	81.8 (79.4–84.2)	< 0.001
Men, <i>n</i>	118	267	173	34	
Men, years (95% CI)	73.3 (71.7–75.0)	74.9 (73.8–75.9)	76.5 (75.1–77.8)	76.6 (73.4–79.8)	0.007
<i>P</i> (sex difference)	0.002	< 0.001	< 0.001	0.006	
<b>Age at death, PDR</b>					
Women, <i>n</i>	215	357	191	59	
Women, years (95% CI)	60.9 (58.7–63.0)	73.2 (72.0–74.4)	73.4 (71.4–75.4)	73.1 (69.6–76.5)	< 0.001
Men, <i>n</i>	185	248	208	72	
Men, years (95% CI)	52.3 (50.4–54.2)	64.4 (62.7–66.2)	68.6 (66.8–70.4)	70.5 (67.4–73.5)	< 0.001
<i>P</i> (sex difference)	< 0.001	< 0.001	< 0.001	0.21	

Statistical significance was calculated using Mann–Whitney *U* test. CI, confidence interval.