

Polygenic prediction of type 2 diabetes in continental Africa

Tinashe Chikowore^{1,2}, Kenneth Ekoru³, Marijana Vujkovic⁴, Dipender Gill^{5,12}, Fraser Pirie⁶, Elizabeth Young⁷, Manjinder S Sandhu⁸, Mark McCarthy⁹, Charles Rotimi³, Adebawale Adeyemo³, Ayesha Motala⁶ and Segun Fatumo^{10,11}

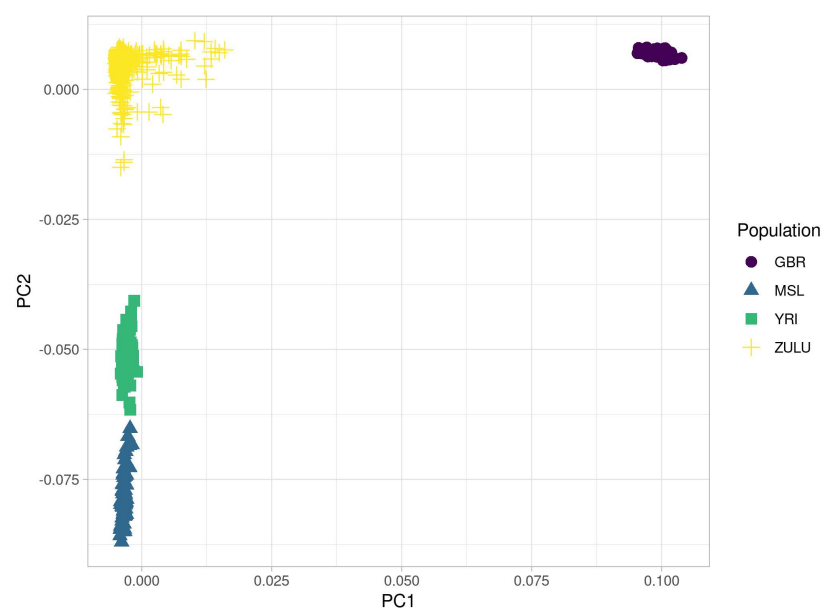
Supplementary Tables and Figures

Supplementary Table 1 Descriptive Statistics of South Africa Zulu participants

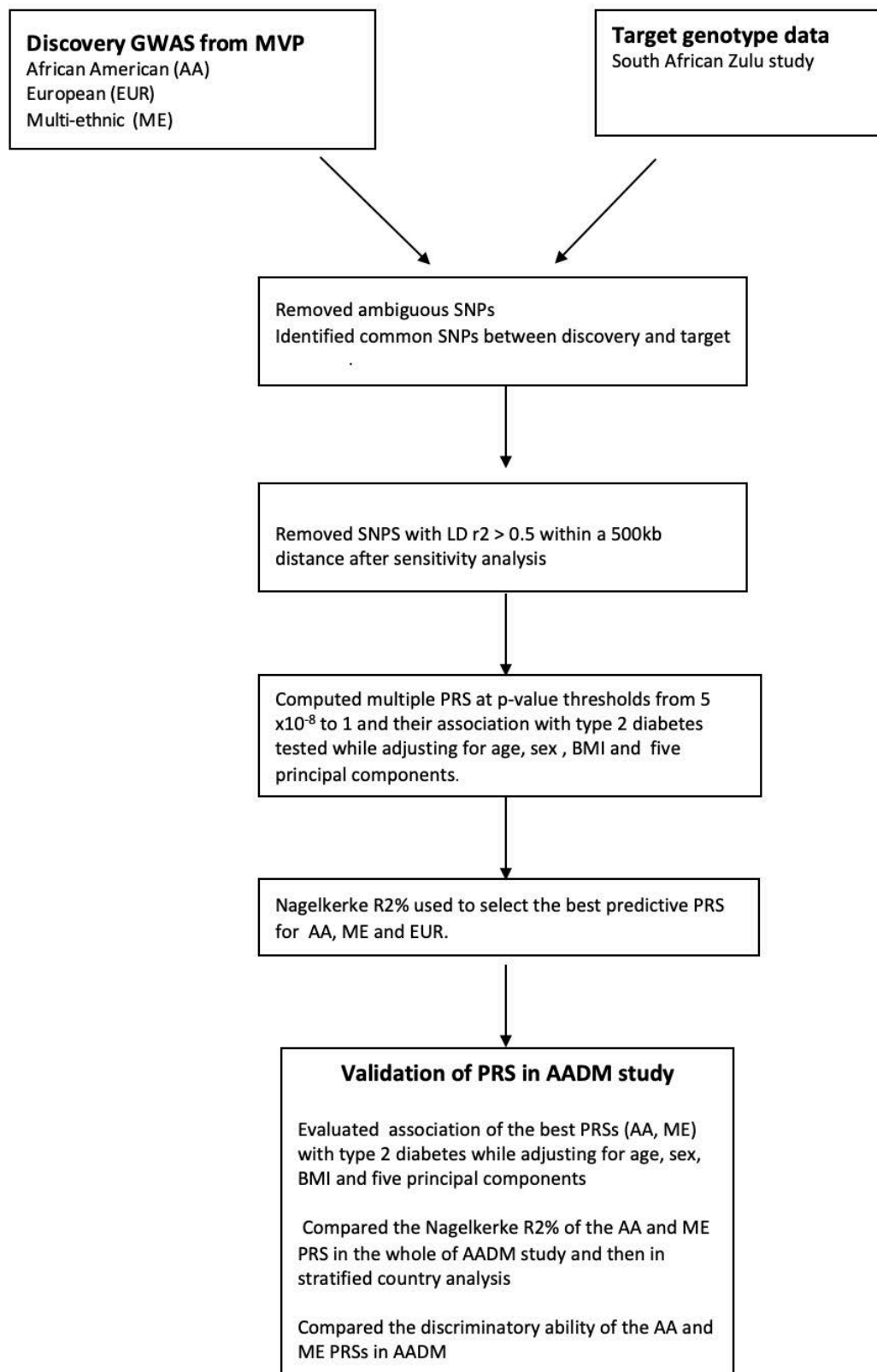
Variables	South African Zulu (<i>n</i> = 2,583) median (IQR)
Female, <i>n</i> (%)	1,906 (73.8)
Age, years	52.0 (39.0-60.0)
BMI, kg/m ²	31.4 (26.1-36.9)
Height, m ²	1.60 (1.55-1.65)
Weight, kg	80.0 (67.5-93.6)
WHR	0.92 (0.85-1.00)
HC, cm	109 (100-120)
WC, cm	103 (91.0-113)

IQR; interquartile range, BMI; body mass index, WHR; waist-hip-ratio, HC; hip circumference, WC; weight circumference

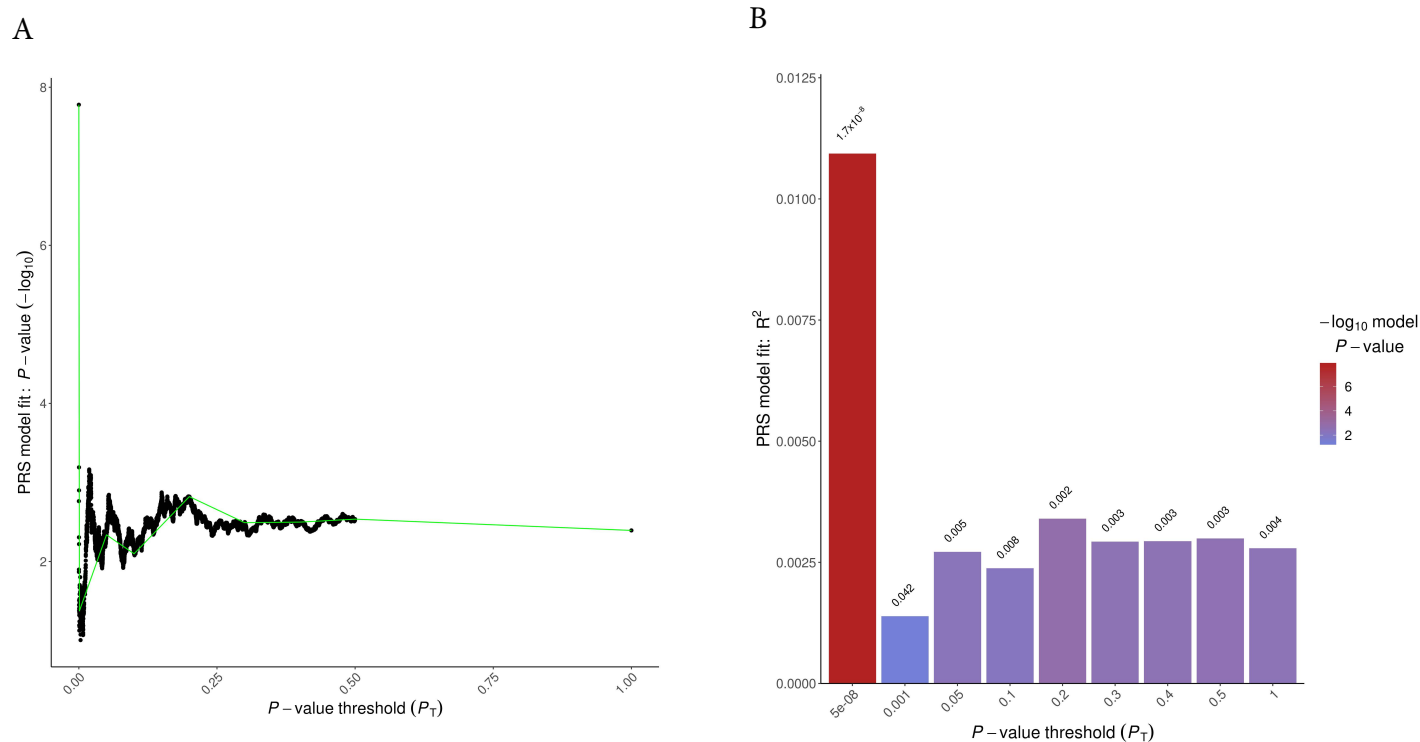
Supplementary Figure 1 PCA plot of South African Zulu study and selected ethnicities from the 1000Genomes



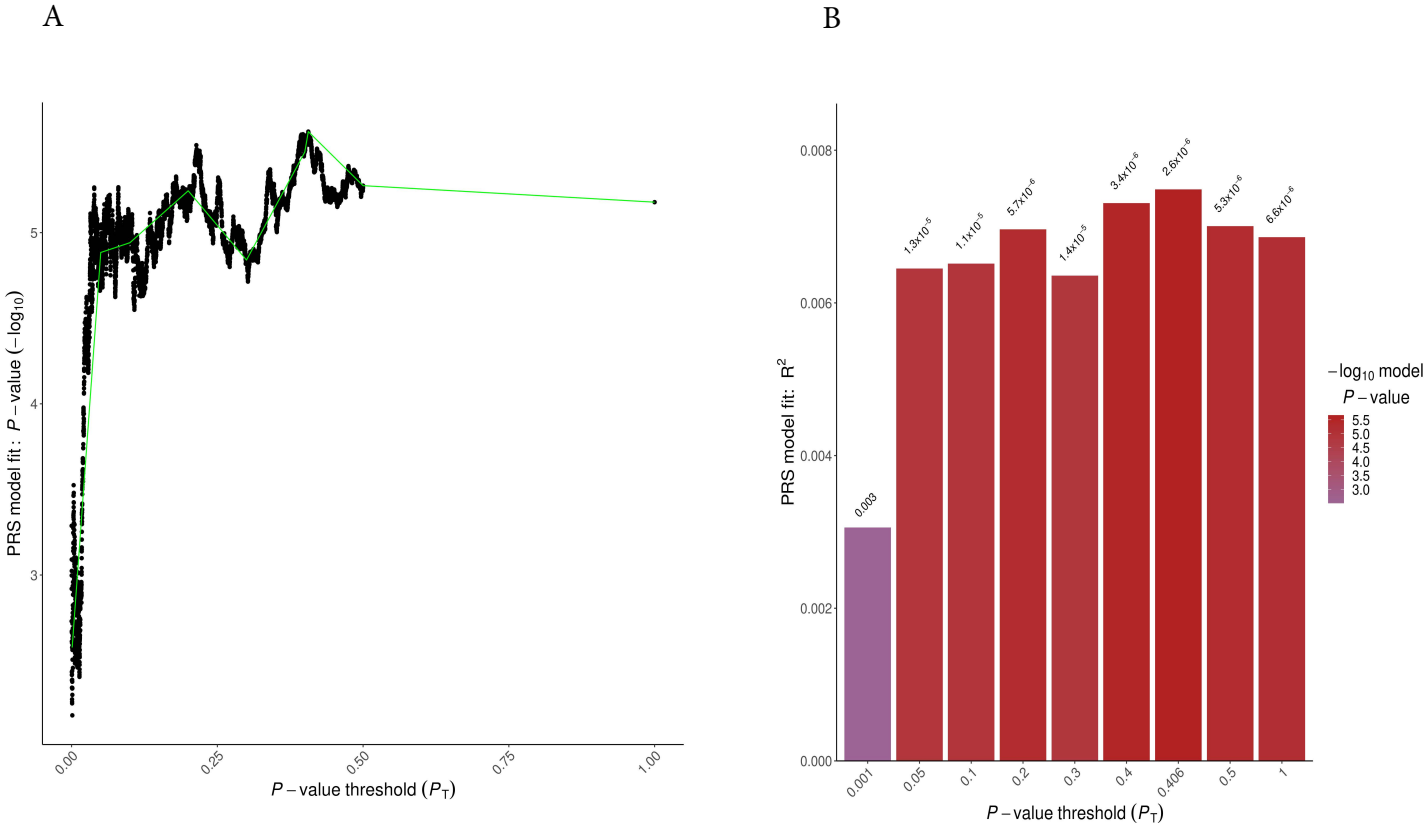
Supplementary Figure 2. Schematic diagram for the approach used to compare the predictive ability of the European, African-American and Multi-ethnic derived polygenic risk scores in Africa



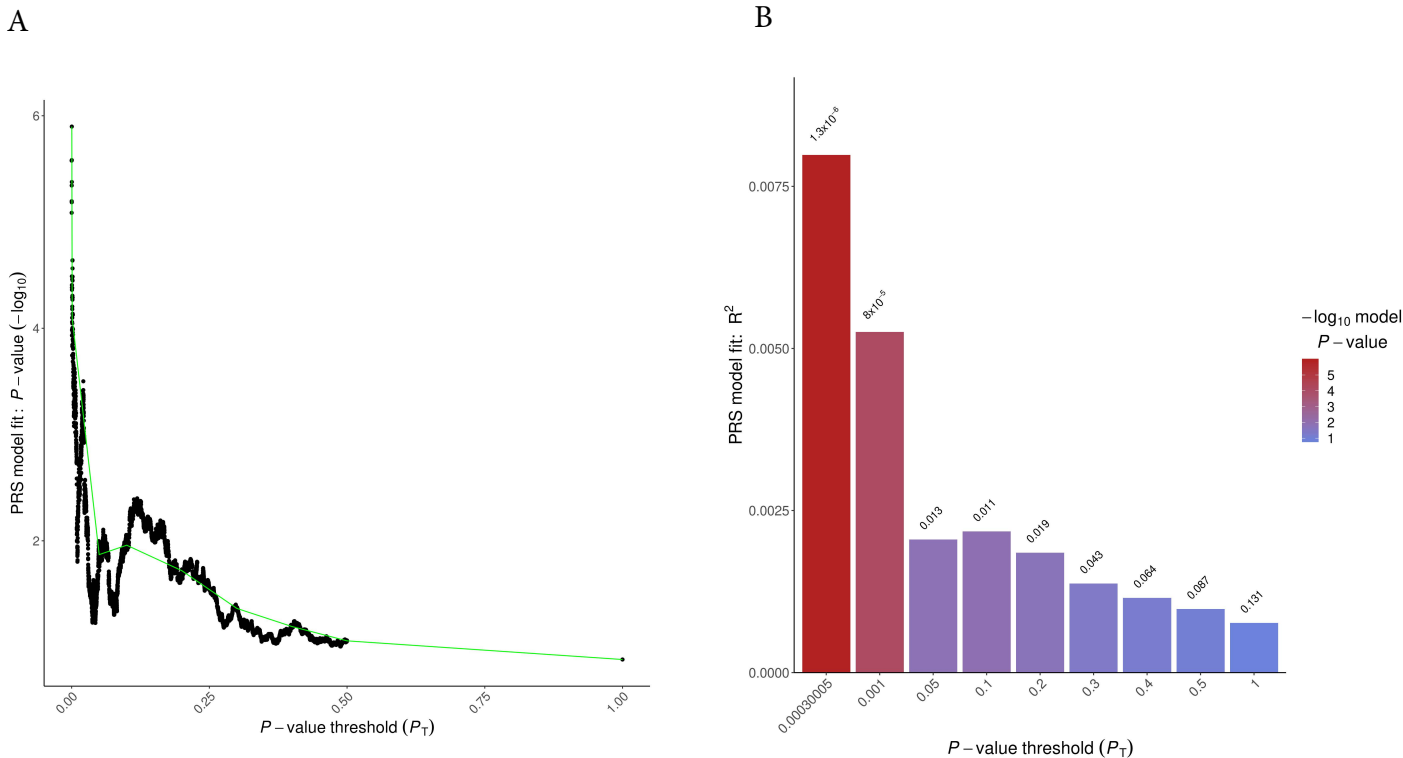
Supplementary Figure 3. Transferability and predictability of multiple African PRSs computed at varied P-value thresholds showing the best PRS which had the highest R2
(A) Plot showing the p-values of the PRSs a measure of transferability (B) Plot showing the variance explained by the PRSs used as a proxy for predictability



Supplementary Figure 4. Transferability and predictability of multiple European PRSs computed at varied P-value thresholds showing the best PRS which had the highest R2
(A) Plot showing the p-values of the PRSs a measure of transferability (B) Plot showing the variance explained by the PRS's used as a proxy for predictability



Supplementary Figure 5. Transferability and predictability of multiple Multi-ethnic PRSs computed at varied P-value thresholds showing the best PRS which had the highest R2
(A) Plot showing the p-values of the PRSs a measure of transferability (B) Plot showing the variance explained by the PRS's used as a proxy for predictability



Supplementary Figure 6. Receiver operating curves illustrating the discriminatory ability of the Multi-ethnic polygenic risk scores with covariates (age, sex , BMI and five principal components) for type 2 diabetes in AADM study

