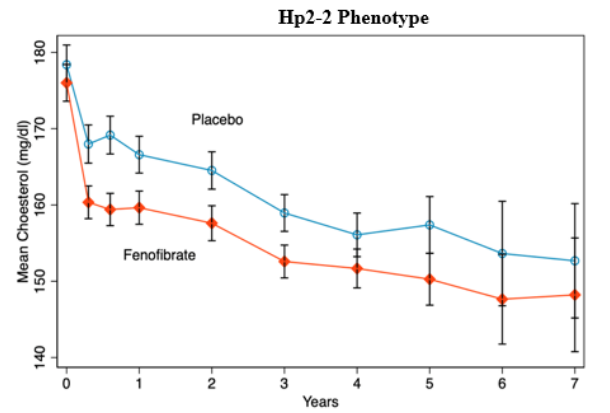
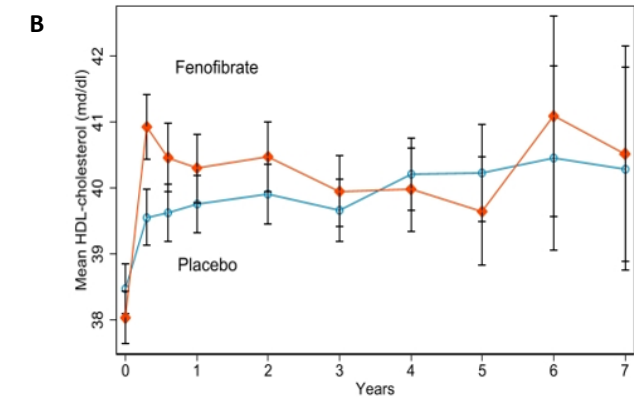


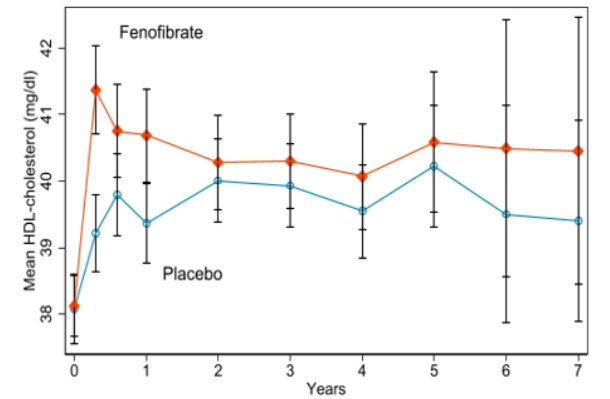
| | | | | | | | | | |
|-----------------|------|------|------|------|------|-----|-----|-----|--|
| No. of Patients | | | | | | | | | |
| Fenofibrate | 1590 | 1512 | 1473 | 1413 | 1057 | 591 | 177 | 144 | |
| Placebo | 1600 | 1534 | 1493 | 1418 | 1069 | 592 | 172 | 145 | |



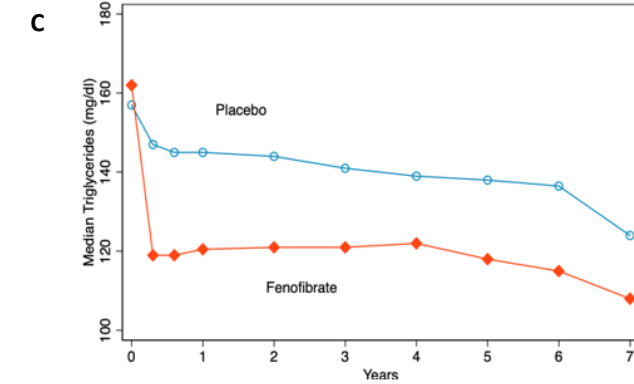
| | | | | | | | | | |
|-----------------|-----|-----|-----|-----|-----|-----|-----|----|--|
| No. of Patients | | | | | | | | | |
| Fenofibrate | 912 | 878 | 850 | 830 | 630 | 359 | 105 | 86 | |
| Placebo | 869 | 839 | 807 | 782 | 608 | 355 | 97 | 80 | |



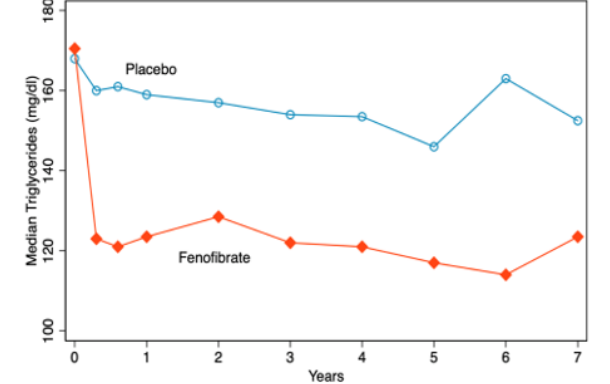
| | | | | | | | | | |
|-----------------|------|------|------|------|------|-----|-----|-----|--|
| No. of Patients | | | | | | | | | |
| Fenofibrate | 1590 | 1512 | 1473 | 1413 | 1057 | 590 | 177 | 144 | |
| Placebo | 1601 | 1534 | 1493 | 1418 | 1069 | 592 | 172 | 145 | |



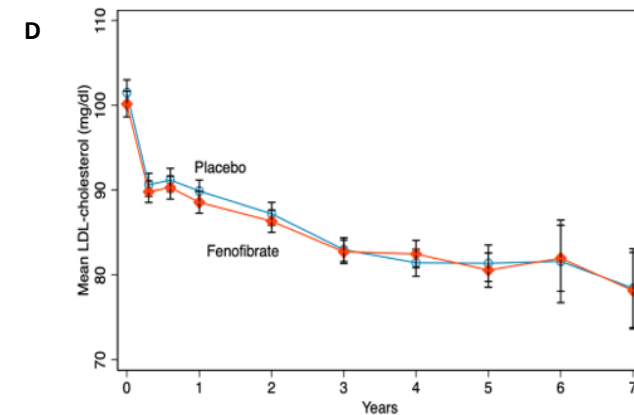
| | | | | | | | | | |
|-----------------|-----|-----|-----|-----|-----|-----|-----|----|--|
| No. of Patients | | | | | | | | | |
| Fenofibrate | 912 | 878 | 850 | 830 | 630 | 359 | 105 | 86 | |
| Placebo | 869 | 839 | 807 | 782 | 608 | 355 | 97 | 80 | |



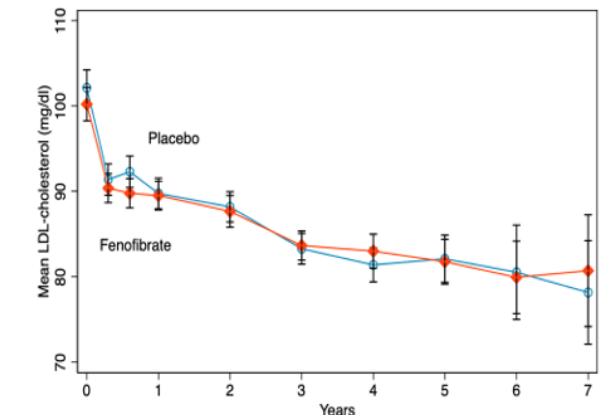
| | | | | | | | | | |
|-----------------|------|------|------|------|------|-----|-----|-----|--|
| No. of Patients | | | | | | | | | |
| Fenofibrate | 1590 | 1512 | 1473 | 1413 | 1057 | 590 | 177 | 144 | |
| Placebo | 1601 | 1534 | 1493 | 1418 | 1069 | 592 | 172 | 145 | |



| | | | | | | | | | |
|-----------------|-----|-----|-----|-----|-----|-----|-----|----|--|
| No. of Patients | | | | | | | | | |
| Fenofibrate | 912 | 878 | 850 | 830 | 630 | 359 | 105 | 86 | |
| Placebo | 869 | 839 | 807 | 782 | 608 | 355 | 97 | 80 | |



| | | | | | | | | | |
|-----------------|------|------|------|------|------|-----|-----|-----|--|
| No. of Patients | | | | | | | | | |
| Fenofibrate | 1590 | 1512 | 1473 | 1413 | 1057 | 590 | 177 | 144 | |
| Placebo | 1600 | 1534 | 1493 | 1418 | 1069 | 592 | 172 | 145 | |



| | | | | | | | | | |
|-----------------|-----|-----|-----|-----|-----|-----|-----|----|--|
| No. of Patients | | | | | | | | | |
| Fenofibrate | 912 | 878 | 850 | 830 | 630 | 359 | 105 | 86 | |
| Placebo | 869 | 839 | 807 | 782 | 608 | 355 | 97 | 80 | |

Supplementary Figure 1. Unadjusted plasma levels of (A) mean total cholesterol, (B) mean HDL-cholesterol, (C) median triglycerides, and (D) mean low-density lipoprotein (LDL) cholesterol at baseline, 4 months, 8 months, 1 year, and annually thereafter for ACCORD lipid trial participants without and with the Hp2-2 phenotype separately. P-values for differences between study groups at 4 months and the end of the study among non-Hp2-2s were, respectively: total cholesterol, $P < 0.001$ and $P = 0.12$; LDL cholesterol, $P = 0.39$ and $P = 0.23$; HDL cholesterol, $P < 0.001$ and $P = 0.13$; and triglycerides, $P < 0.001$ for both comparisons with the use of nonparametric tests. P-values for differences between study groups at 4 months and the end of the study among patients with the Hp2-2 phenotype, respectively: total cholesterol, $P < 0.001$ and $P = 0.03$; LDL cholesterol, $P = 0.43$ and $P = 0.76$; HDL cholesterol, $P < 0.001$ and $P = 0.25$; and triglycerides, $P < 0.001$ for both comparisons with the use of nonparametric tests. End-of-study visits were those that occurred in early 2009 and included follow-up at years 4, 5, 6, and 7.