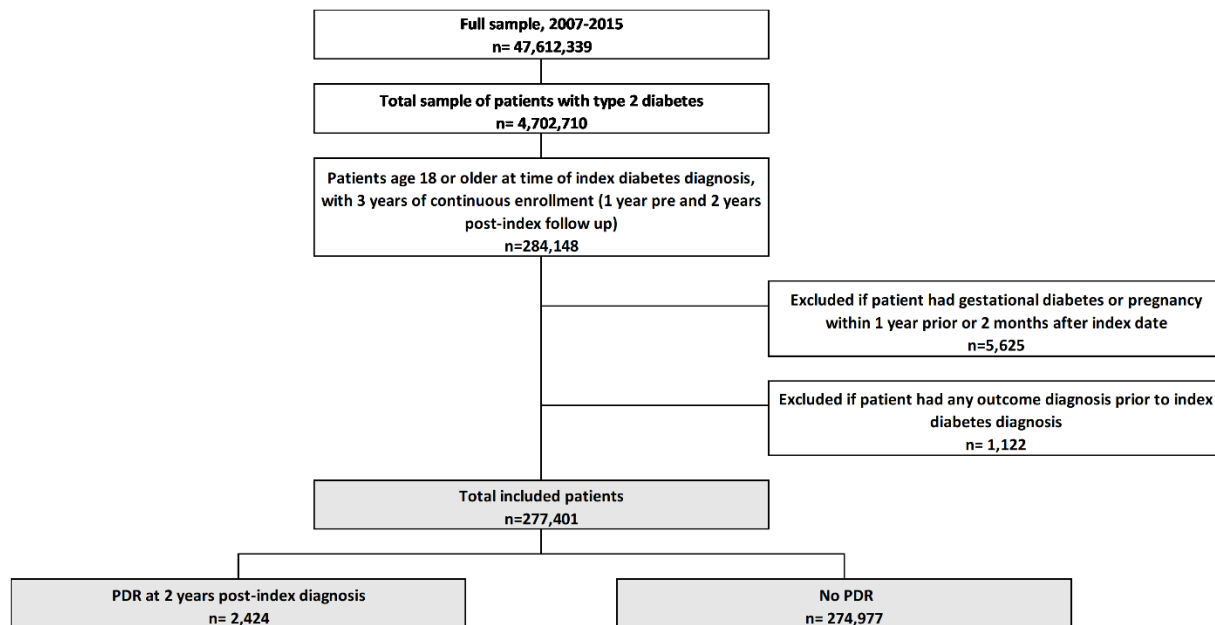
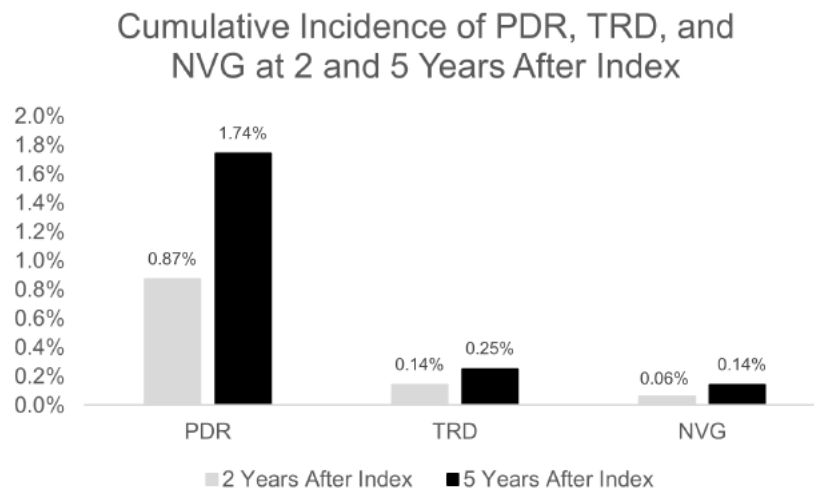


Supplemental Figure S1. 2-Year Attrition Diagram



This figure demonstrates how patients were included and excluded in the 2-year cohort. Patients were included if they had any of the following: 1 inpatient claim with a diagnosis of type 2 diabetes, 1 prescription fill for diabetes medication, or 2 outpatient claims with a diagnosis of type 2 diabetes within 180 days. Only patients with an index diagnosis prior to October 1, 2013 were included to allow for 2 years of follow-up.

Supplemental Figure S2. Cumulative Incidence of Proliferative Diabetic Retinopathy, Tractional Retinal Detachment, and Neovascular Glaucoma at 2 and 5 Years After Index



Cumulative incidence of PDR, TRD, and NVG were significantly higher at 5 years than at 2 years following index diagnosis ($p < 0.0001$). PDR=proliferative diabetic retinopathy; TRD=tractional retinal detachment; NVG=neovascular glaucoma.

Supplemental Table S1. List of medication classes used to screen for the presence of diabetes in our cohort.

Medication Class	Medication Sub-Class
Insulins	All insulins
Antihyperglycemics	DPP-4 Inhibitors
	DPP-4 Inhibitors & HMG COA Reductase Inhibitors (Statins) Combination
	Glucocorticoid Receptor Blocker
	DPP-4 Enzyme Inhibitor & Thiazolidinedione Combination
	Sodium/Glucose Cotransporter 2 (SGLT2) Inhibitor
	SGLT2 Inhibitor & Biguanide Combination
	DPP-4 Inhibitor & Biguanide Combination
	Amylin Analog-Type
	Incretin Mimetic (GLP-1 Receptor Agonist)
	Insulin-Release Stimulant Type
	Biguanide Type
	α -Glucosidase Inhibitors
	Thiazolidinedione (PPAR- γ Agonist)
	Thiazolidinedione & Sulfonylurea Combination
	Insulin-Release Stimulators & Biguanide Combination
	Thiazolidinedione & Biguanide Combination
	Biguanide & Dietary Supplement Combination
	Dopamine Receptor Agonists
	SGLT-2 & DPP-4 Inhibitor Combination
Hypoglycemics	Insulin-Release Stimulant Type
	Biguanide Type (Non-Sulfonylureas)
	α -Glucosidase Inhibitor Type (N-S)
	Insulin-Response Enhancer (N-S)
	Insulin-Response & Insulin Release Combination
	Insuline Release Stimulator & Biguanide (N-S) Combination
	Insulin-Response Enhancer & Biguanide Combination
	Biguanide & Dietary Supplement Combination

Supplemental Table S2: International Classification of Diseases, 9th Edition (ICD-9) and Current Procedural Terminology (CPT) codes used to identify incidence of proliferative diabetic retinopathy (PDR), tractional retinal detachment (TRD), and neovascular glaucoma (NVG)

Outcome	ICD-9/CPT Code	Description
PDR	362.02	Proliferative diabetic retinopathy
	379.23	Vitreous hemorrhage
	67228	Treatment of extensive or progressive retinopathy; (eg, diabetic retinopathy), photocoagulation
TRD	361.81	Tractional detachment of retina
	362.02 AND 67036	PDR AND Vitrectomy, mechanical, pars plana approach
	362.02 AND 67039	PDR AND Vitrectomy, mechanical, pars plana approach; with focal endolaser photocoagulation
	362.02 AND 67040	PDR AND Vitrectomy, mechanical, pars plana approach; with endolaser panretinal photocoagulation
	362.02 AND 67041	PDR AND Vitrectomy, mechanical, pars plana approach; with removal of preretinal cellular membrane (eg, macular pucker)
	362.02 AND 67043	PDR AND Vitrectomy, mechanical, pars plana approach; with removal of subretinal membrane (eg, choroidal neovascularization), includes, if performed, intraocular tamponade (ie, air, gas, or silicone oil) and laser photocoagulation
	362.02 AND 67113	PDR AND Repair of complex retinal detachment (eg, proliferative vitreoretinopathy, stage C-1 or greater, diabetic traction retinal detachment, retinopathy of prematurity, retinal tear of greater than 90 degrees), with vitrectomy and membrane peeling, including, when performed, air, gas, or silicone oil tamponade, cryotherapy, endolaser photocoagulation, drainage of subretinal fluid, scleral buckling, and/or removal of lens
NVG	365.63	Glaucoma associated with vascular disorders
	364.42	Rubeosis iridis
	365.89 AND 66179	Other specified glaucoma AND Aqueous shunt to extraocular equatorial plate reservoir, external approach; without graft
	365.89 AND 66180	Other specified glaucoma AND Aqueous shunt to extraocular equatorial plate reservoir, external approach; with graft
	365.89 AND 66710	Other specified glaucoma AND Ciliary body destruction; cyclophotocoagulation, transscleral

Abbreviations: PDR=Proliferative diabetic retinopathy; TRD=Tractional retinal detachment; NVG=Neovascular glaucoma