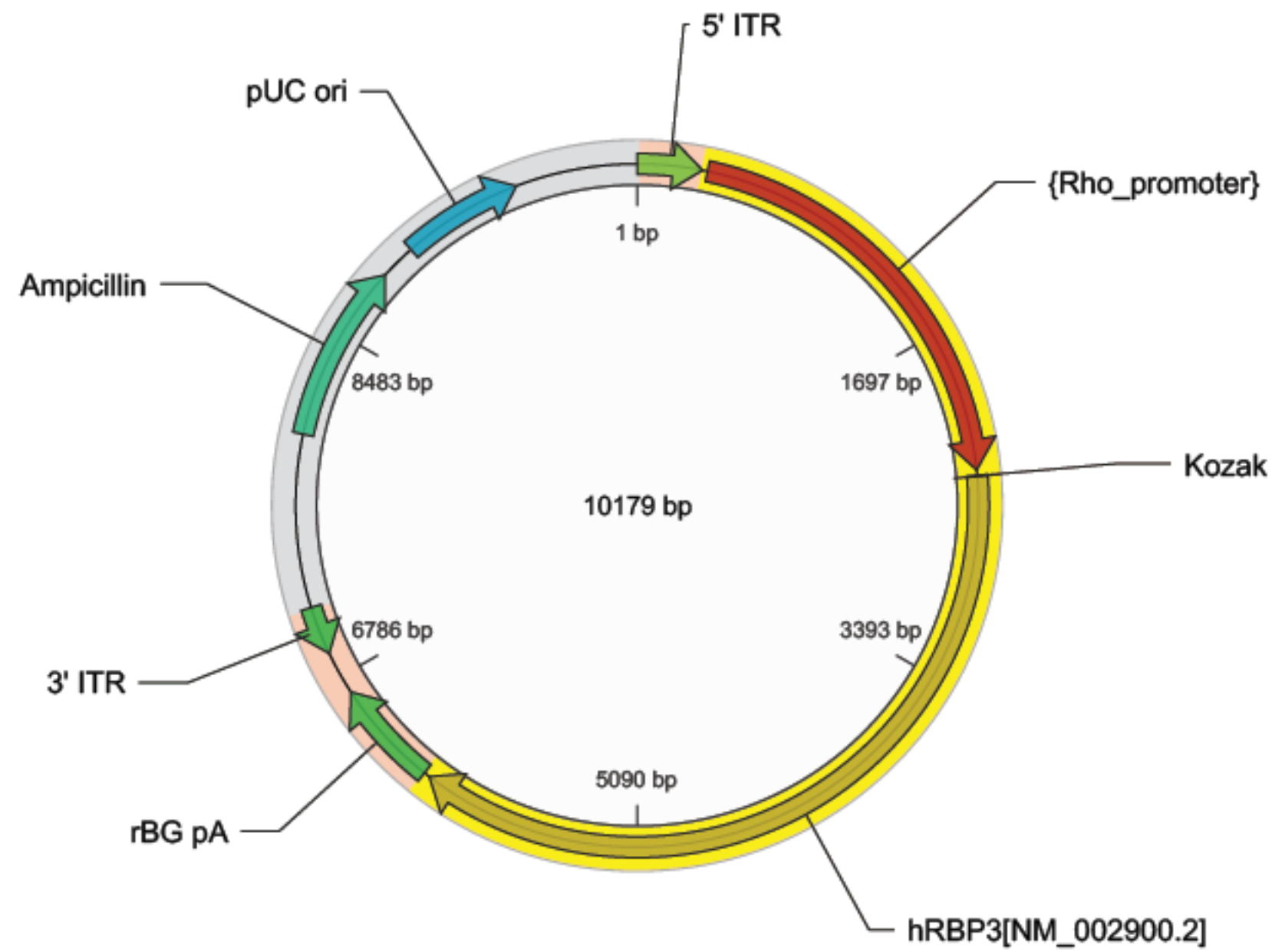
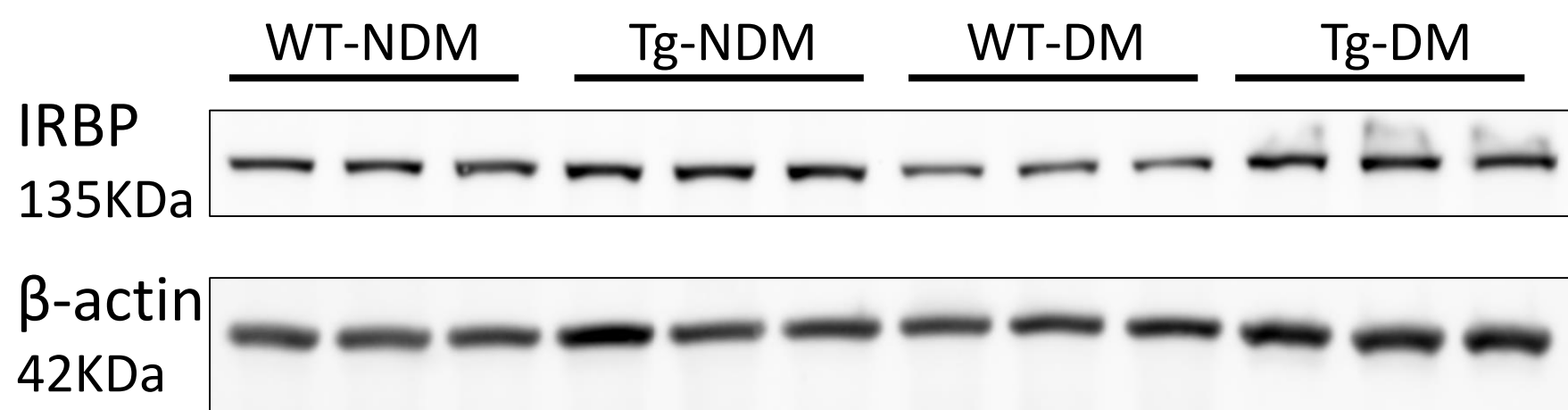


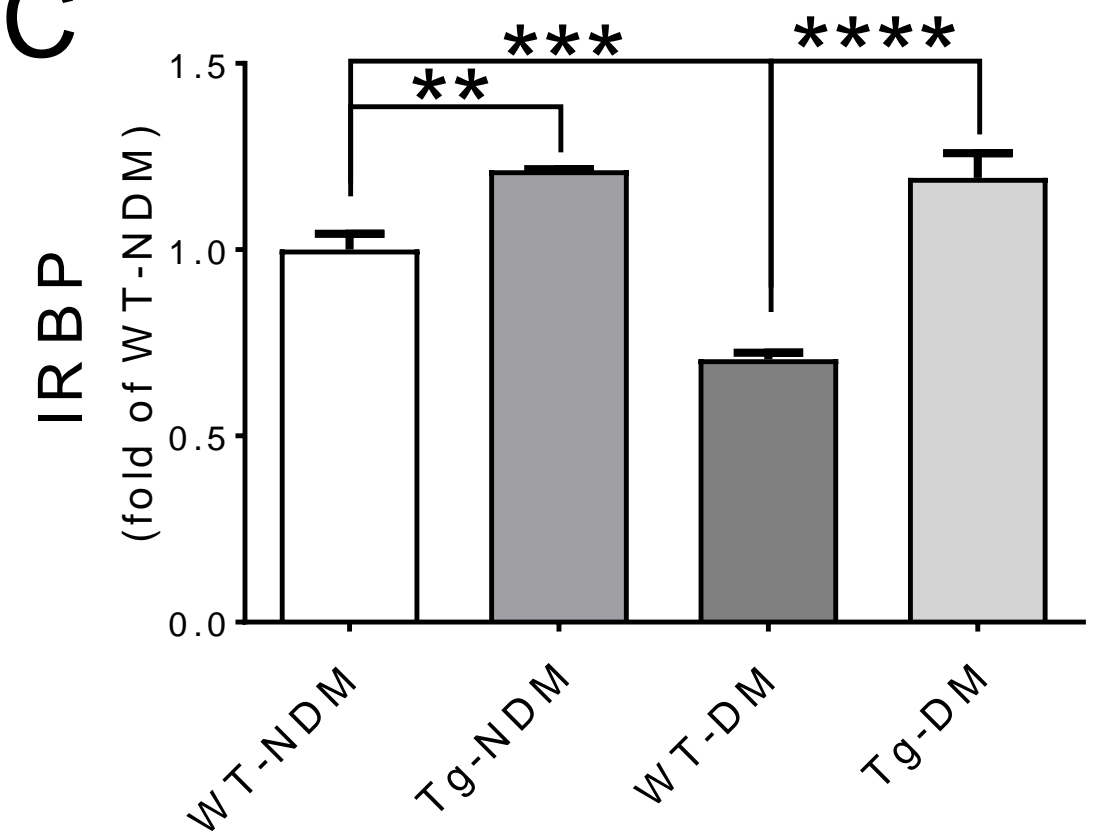
A



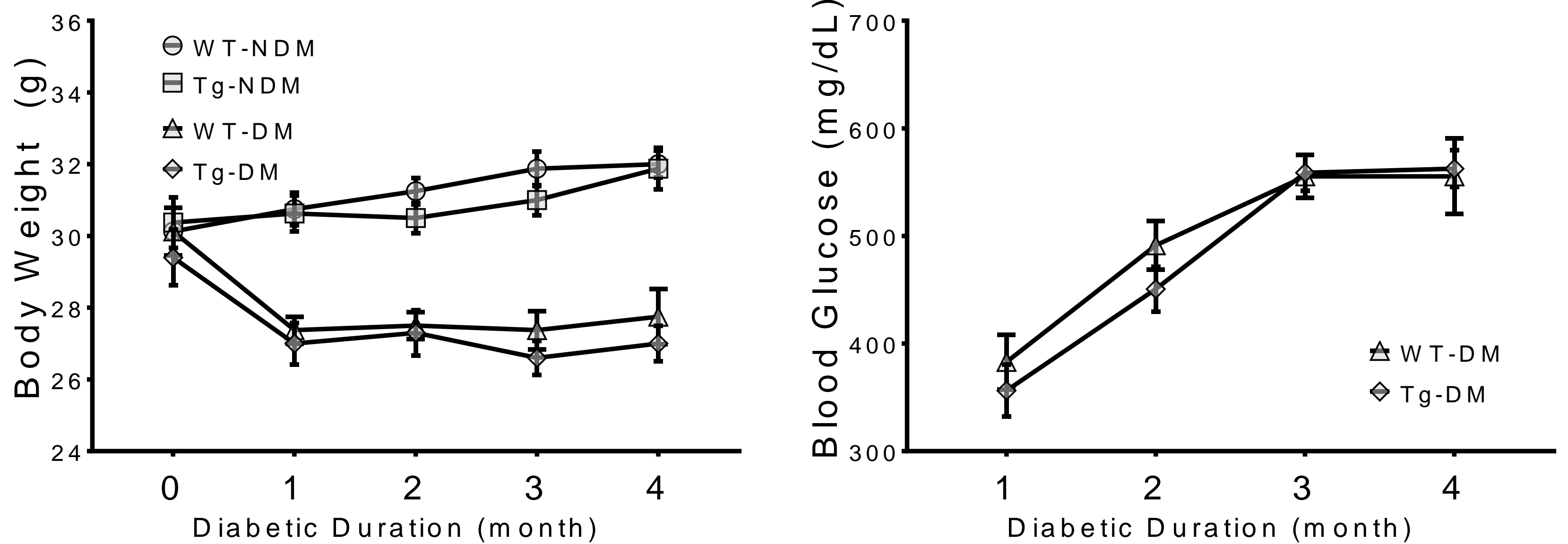
B



C



**Figure S1. Construction of *IRBP* transgenic (*IRBP-TG*) mouse with rod-specific overexpression of human *IRBP*** (A) The map of *IRBP* (*hRBP3*) expression vector under the control of the rhodopsin promoter. (B) Western blot using an *IRBP* antibody (Proteintech) in the eyecups of diabetic *IRBP* *Tg* mice (*Tg*) and WT littermates (*WT*). (C) *IRBP* levels in (B) were analyzed by densitometry and normalized by  $\beta$ -actin. Data are expressed as means $\pm$ SEM. N=5. \*  $P<0.05$ , \*\*  $P<0.01$ , and \*\*\*\*  $P<0.0001$ .



**Figure S2. Body weight and blood glucose level in diabetic IRBP-Tg mice and WT littermates.** Diabetes was induced in *IRBP-Tg* mice (Tg-DM) and WT littermates (WT-DM) by STZ injection, with age-matched nondiabetic groups (NDM) for controls. **(A)** Monthly averaged body weight of each group before and after STZ injection. **(B)** Blood glucose levels of DM groups were monitored monthly after diabetes onset. Data are expressed as mean $\pm$ SEM. N=10.