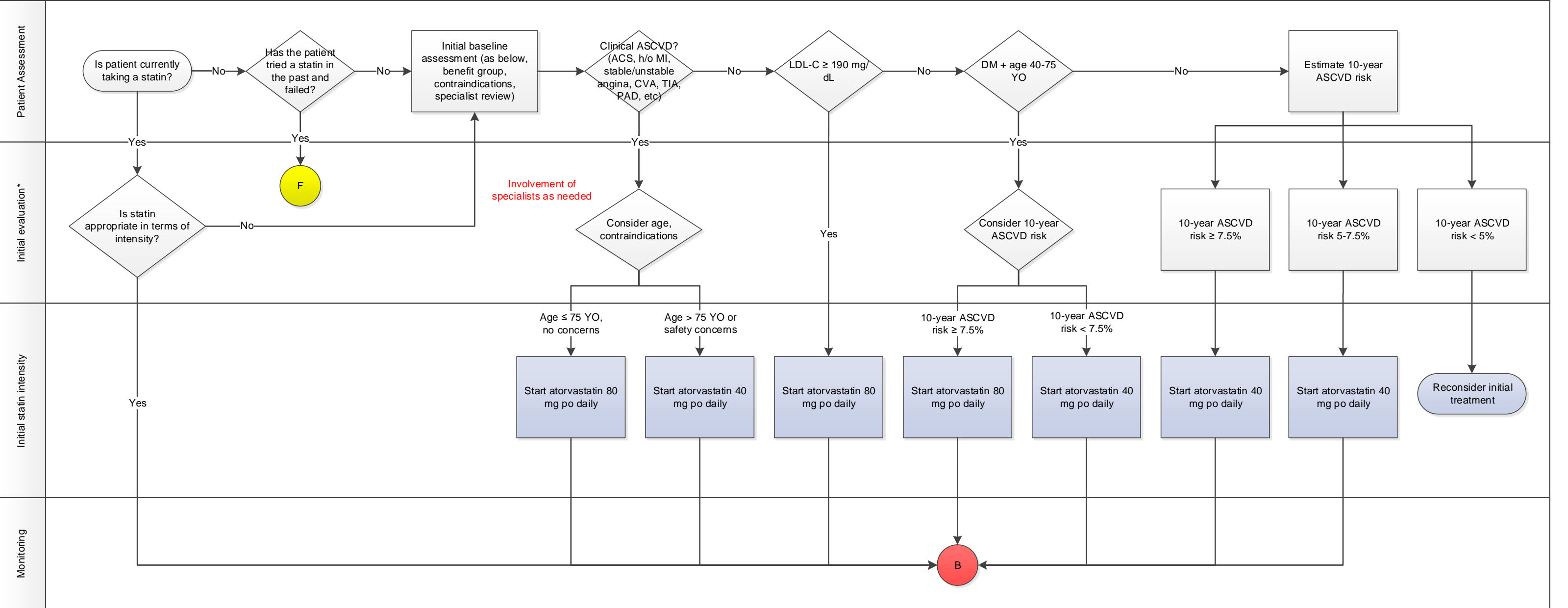


VHAN Statin Outreach Service Clinical Algorithm – Step A



- *Initial baseline evaluation of patient:**
- Recent baseline lipid panel (fasting preferred) + past lipid panels in patients who have previously taken statins
 - Liver function tests (ALT in particular)
 - CK (if indicated in those that may be at increased risk for adverse muscle events – family history of statin intolerance or muscle disease, clinical presentation, or concomitant drug therapy that might increase risk of myopathy)
 - Medication history
 - Comorbidities (see right)
 - A1c (if DM status is unknown)
 - Recent BP
 - Social history: smoking status, EtOH intake
 - Pregnancy/breastfeeding status (see right)
 - Hemodialysis status

- Comorbid condition evaluation:**
- Transplant: contact specialist prior to statin initiation (e.g. contact hepatologist prior to initiation of statin in liver txp patient).
 - Hepatitis C: stable HCV infection is not a contraindication to statin use.
 - End stage liver disease: consider contacting hepatologist prior to statin initiation.
 - HIV: use caution in terms of drug interactions; consider atorvastatin and pravastatin first.
 - Hemodialysis: do not initiate statins in this patient population if patient was not already on a statin prior to dialysis.

- Women of childbearing age:**
- Statins are contraindicated in women of childbearing age without appropriate contraception in place to prevent pregnancy.
 - Ensure patient's method of contraception or either partner with surgical solution prior to starting statin.
 - Defer initiation of contraception to PCP – send message to PCP after discussing options with patient. Do not start statin until this has been addressed by provider.
 - Counsel patient on potential risks with statins and pregnancy.
 - Avoid statin in breastfeeding women – defer statin initiation until patient is finished breastfeeding.
 - Document discussion in EMR.

Figure S1: shape legend

- White oblong: start of process
- Blue oblong: end of process
- White diamond: Yes/No decision step
- White square: evaluation step
- Blue square: evaluation step, documentation shared with prescriber

Figure S1: colored circle legend

- Small yellow circle: direction to step F, treatment initiation for those having tried and failed statin previously
- Small red circle: direction to step B, monitoring initiation of statin and general follow up
- Small orange circle: direction to step C, monitoring patient after failing first statin
- Small green circle: direction to step D, monitoring patient after failing first statin and pravastatin
- Small purple circle: direction to step E, monitoring patient after failing first statin, pravastatin, and rosuvastatin

