

# General experimental flow chart

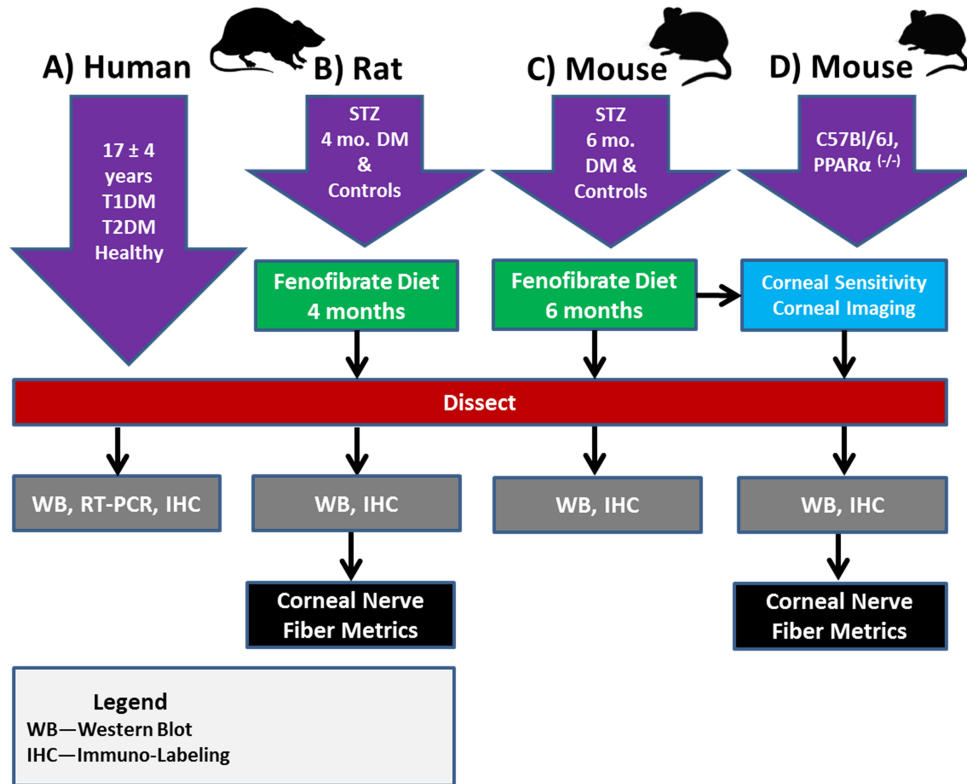


Figure 1. Experimental flow chart. Study groups included diabetic humans and healthy controls and rats and mice with STZ-induced diabetes (T1DM model) with/without fenofibrate (Feno) treatment. In vivo experiments included blood glucose, corneal sensitivity, and corneal lesions. months of age in C57Bl/6J and PPARα<sup>-/-</sup> mice. Ex vivo experiments . . .