

Patients who were hospitalized between June 2021 and August 2022 and who had undergone abdominal CT scanning during hospitalization or within 3 months before admission (n=134)

Excluded (n=50)

Pancreatic diseases (n=27)

Pancreatic tumor
Pancreatic neuroendocrine tumor
Pancreatitis

Kidney diseases (n=3)

Kidney cancer
End stage renal disease

Acute stage of infection (n=4)

Liver diseases (n=5)

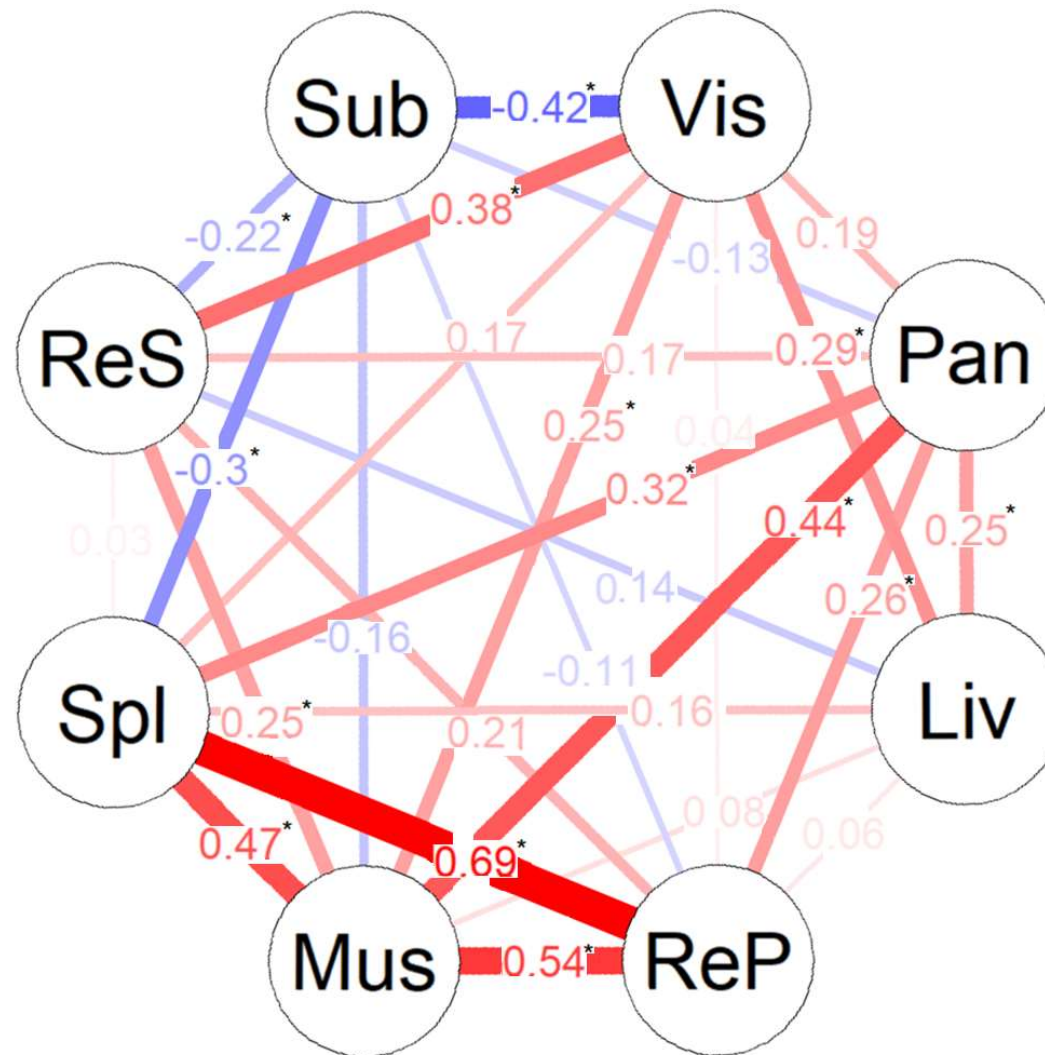
Autoimmune hepatitis
Hepatitis B
Liver cirrhosis

Adrenal diseases (n=11)

Cushing's syndrome
Pheochromocytoma
Use of glucocorticoid (≥ 10 mg)

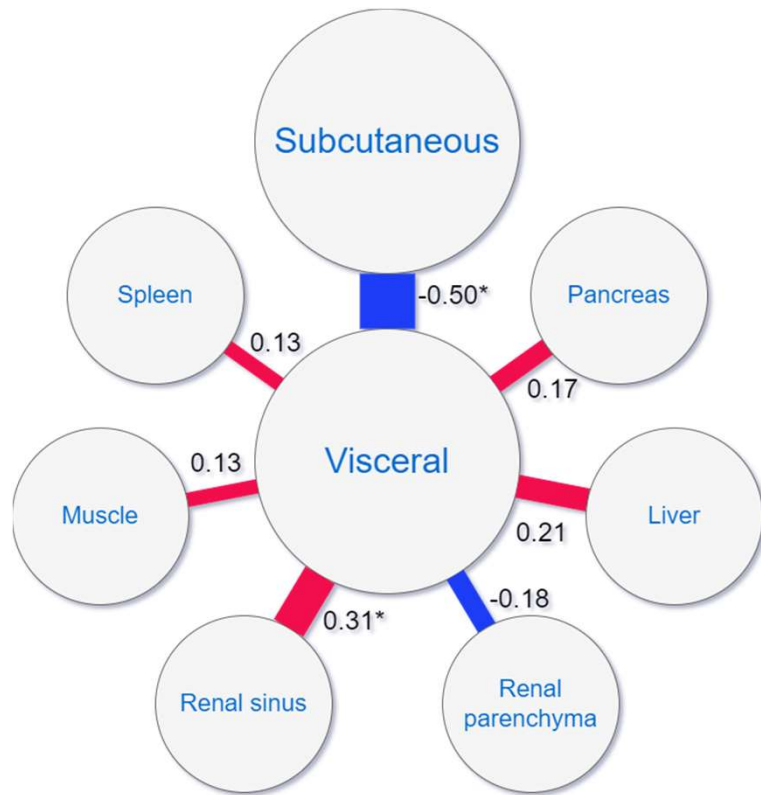
Analyzed (n=84)

Supplementary Figure 1 - Flow chart of the recruitment of participants.

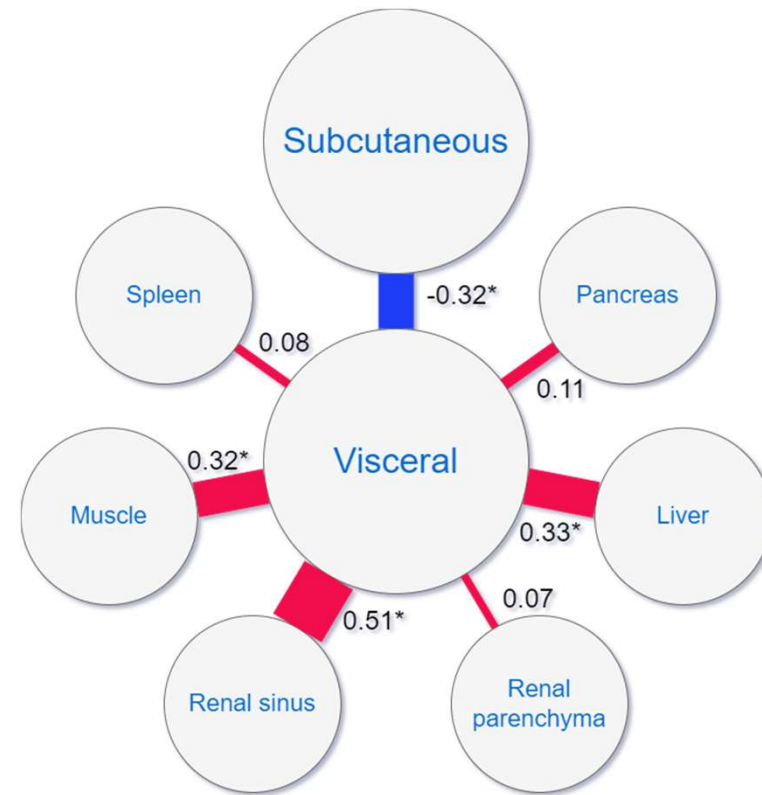


Supplementary Figure 2 - Partial correlation between visceral fat, subcutaneous fat, and each intra- and peri-organ fat. Vis, visceral fat; Pan, pancreas fat; Liv, liver fat; ReP, renal parenchyma fat; Mus, skeletal muscle fat; Spl, spleen fat; ReS, renal sinus fat; Sub, subcutaneous fat. Numerical values represent correlation coefficients. The thickness of the line increases according to the magnitude of the correlation coefficient. Asterisks indicate $P < 0.05$.

Men (n=43)



Women (n=41)



Supplementary Figure 3 - Partial correlation of visceral fat, subcutaneous fat, and each intra- and peri-organ fat divided by sex. Numerical values represent correlation coefficients. The thickness of the line increases according to the magnitude of the correlation coefficient. Asterisks indicate $P < 0.05$.