

Supplementary Table 1: Log transformations applied in the analysis.

Measures	Transformations
Glucose MAUC (mg/dL)	$\text{Log}(x)$
C-peptide MAUC (pmol/mL)	$\text{Log}(x+1)$
GADA Titer (DK units/mL)	$\text{Log}(x+50)$
IA2A Titer (DK units/mL)	$\text{Log}(x+1000)$
IAA Titer (index)	$\text{Log}(x+0.001)$
ICA Titer (index)	$\text{Log}(x+5)$
ZnT8A Titer (index)	$\text{Log}(x+0.01)$

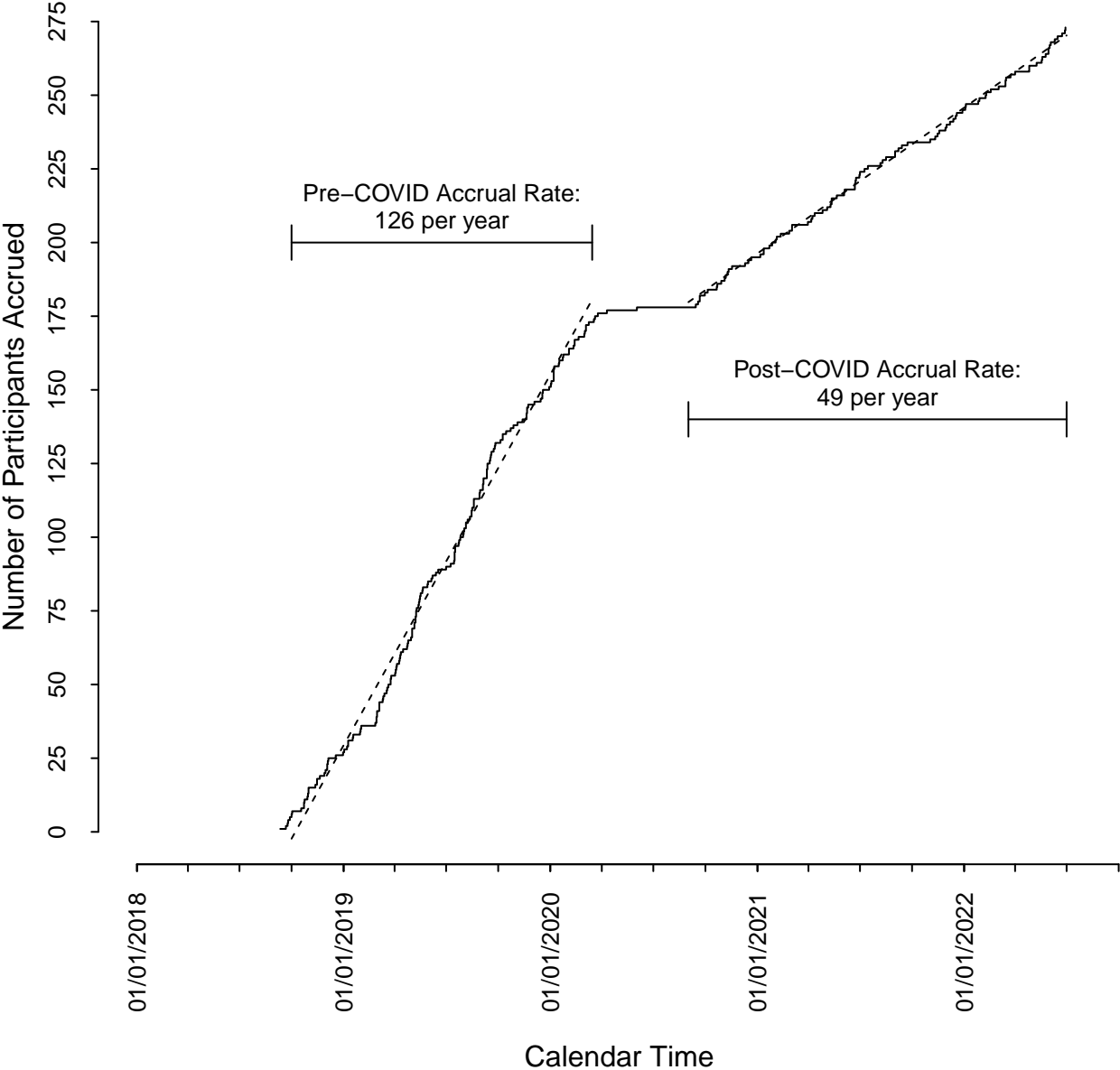
Supplementary Table 2: Follow-up Summary and Impact of Missed Tests Due to COVID-19 Pandemic

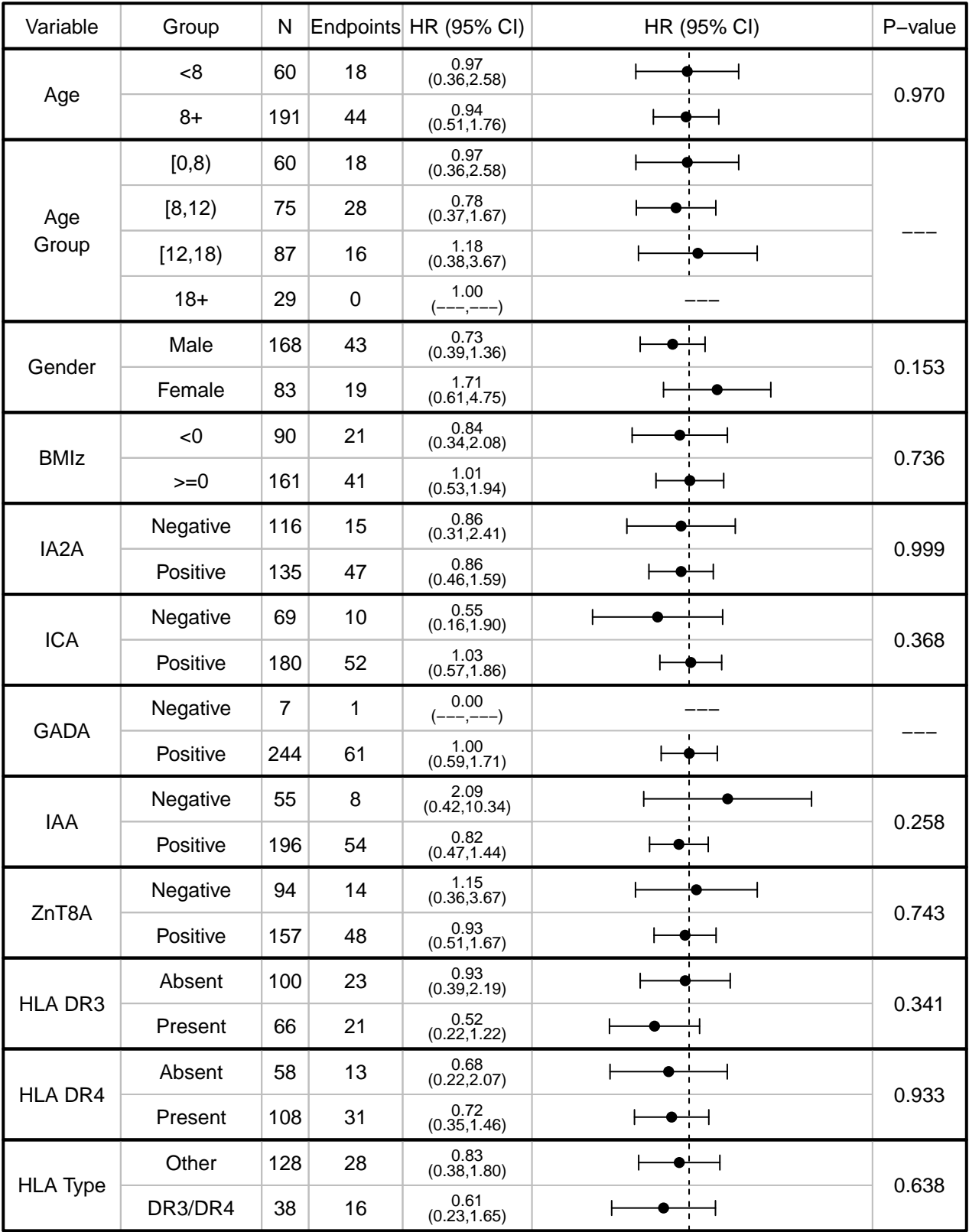
	Hydroxychloroquine		Placebo	
	Met Endpoint	No Endpoint	Met Endpoint	No Endpoint
Total Number	41	127	21	62
Median (IQR) Time to Endpoint/Last Follow-Up Time (Months)	18.6 (12.9-25.0)	24.6 (12.7-36.7)	18.6 (12.7-30.5)	24.9 (13.1-36.0)
Has Unconfirmed Abnormal OGTT, Re-Tested Within 1 Year	6	27	5	13
Has Unconfirmed Abnormal, Not Re-Test Within 1 Year	4	8	2	5
No Issues	31	92	14	44

Supplementary Table 3: Adverse events. The table below tabulates the adverse events restricted to Grades 2 or greater and the causality to Possibly related, probably related, or definitely related.

	Hydroxychloroquine		Placebo	
	Number of Events	Number of Subjects	Number of Events	Number of Subjects
Nervous system disorders	6	5 (2.73%)	1	1 (1.11%)
Investigations	4	3 (1.64%)	0	0 (0.00%)
Blood and lymphatic system disorders	1	1 (0.55%)	0	0 (0.00%)

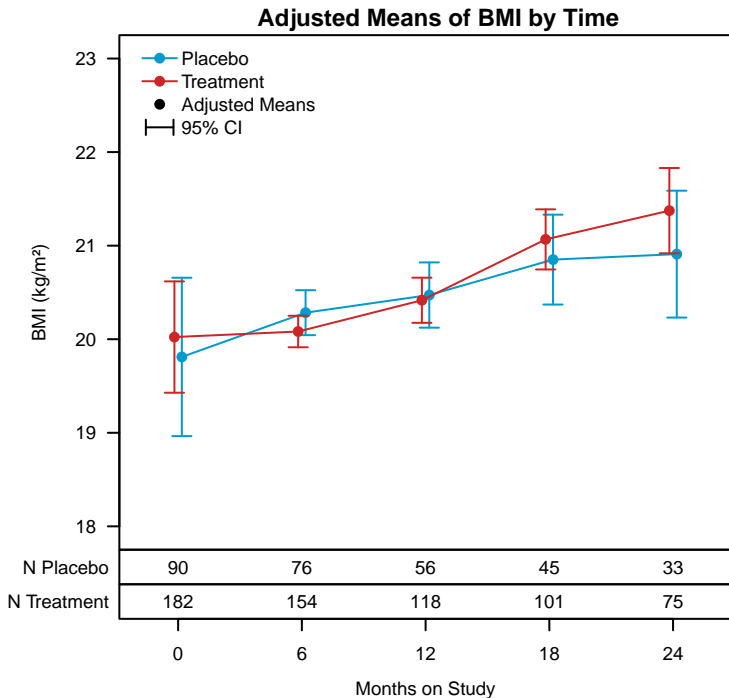
TN-22 Accrual Rate, Pre vs Post COVID-19



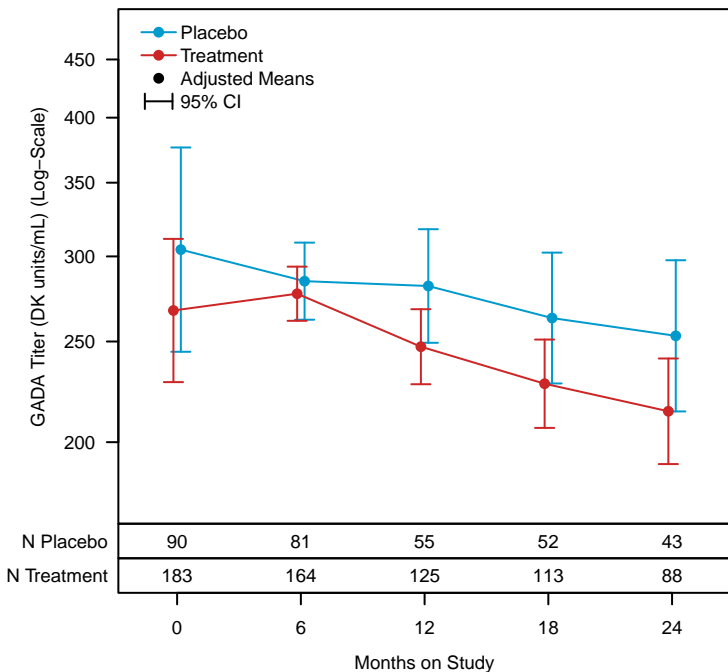


Supplementary Figure 2: Treatment interactions among predefined subgroups.

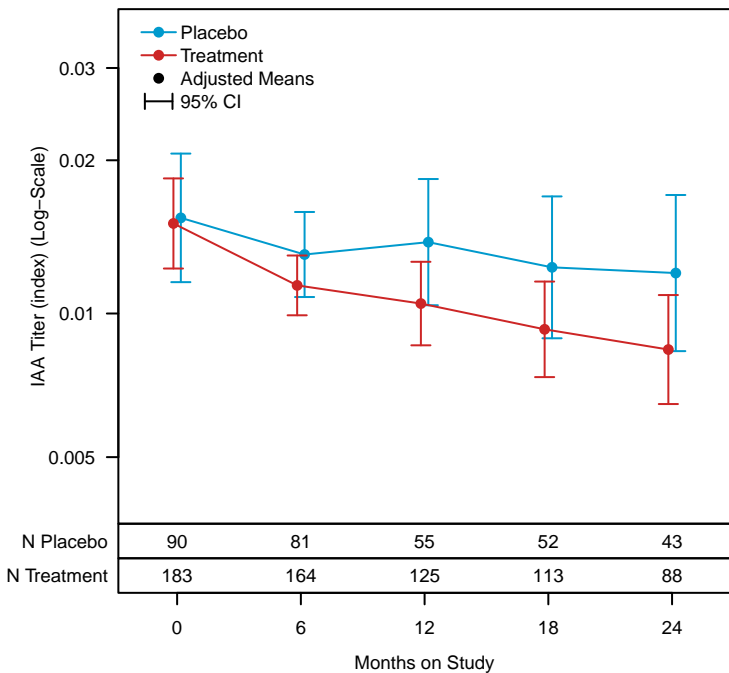
Supplementary Figure 3: BMI in the two treatment arms.



Adjusted Means of GADA Titers Over Time via ANCOVA



Adjusted Means of IAA Titters Over Time via ANCOVA



Supplementary Figure 4: Effects of hydroxychloroquine in the titers of anti-GAD and anti-insulin antibodies in individuals who had these autoantibodies at the time of enrollment. (A) The slope of the GADA was -0.055 U/month in the placebo and -0.114 U/month in the hydroxychloroquine treatment groups ($p=0.036$). (B) the slopes of the IAA titers were -0.052 in the placebo and -0.245 U/month in the hydroxychloroquine group ($p=0.011$). The number of participants with positive autoantibodies are shown on the bottom of each graph. The mean \pm 95% CI are shown.