

SUPPLEMENTAL MATERIALS

Global, regional, and national prevalence of prediabetes in 2021 and 2045

Authors: Mary R. Rooney*, Michael Fang,* Katherine Ogurtsova, Bige Ozkan, Justin B. Echouffo-Tcheugui, Edward J. Boyko, Dianna J Magliano, Elizabeth Selvin

***Contributed equally**

Supplemental Table 1. Inclusion and exclusion criteria for IFG and IGT systematic review

| Inclusion Criteria | Exclusion Criteria |
|--|--|
| <ul style="list-style-type: none">• Prediabetes - prevalence and/or number of people• Population based studies in adults (national or regional)• Registries and insurance-based data• English language studies• Impaired glucose tolerance (IGT)• Impaired fasting glucose (IFG)• Hemoglobin A1C (HbA1C), glycosylated hemoglobin, glycated hemoglobin (haemoglobin) | <ul style="list-style-type: none">• Diabetes prevalence only (i.e., no prediabetes)• Prediabetes in specific populations (occupational), e.g., nurses, taxi drivers• Prediabetes in specific diseases, e.g., in people with cardiovascular disease, kidney disease• Prediabetes in specific age groups, e.g., children, adolescents, elderly, 65+ years• Hospital- or clinic-based studies or general practice studies• Studies in children and adolescents• Type 1 diabetes• Family studies, birth cohorts |

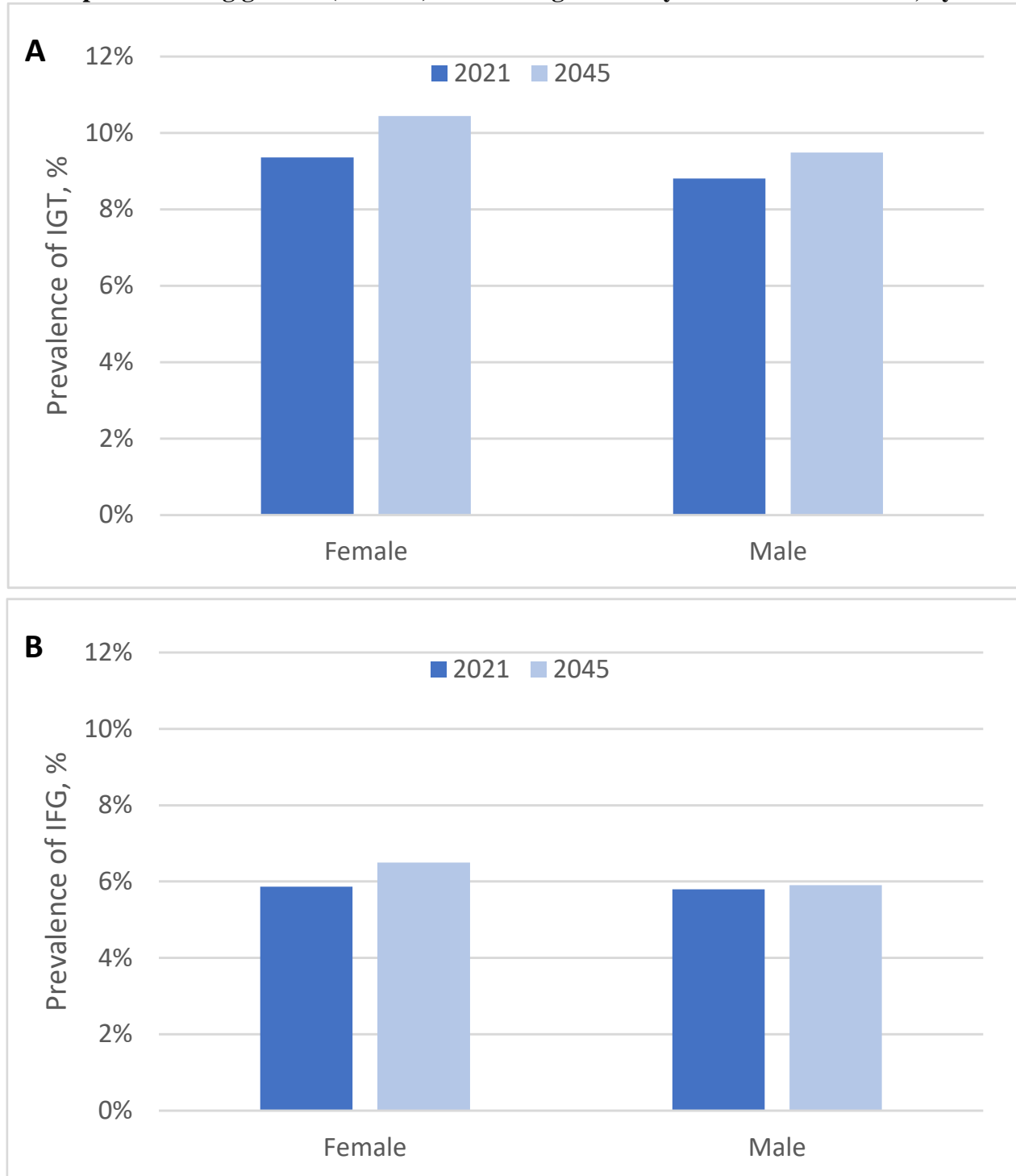
Supplemental Table 2. Age-adjusted* prevalence estimates for impaired glucose tolerance (IGT) and impaired fasting glucose (IFG) for each country after data extrapolation

[Supplemental Table 2 shown in Excel spreadsheet]

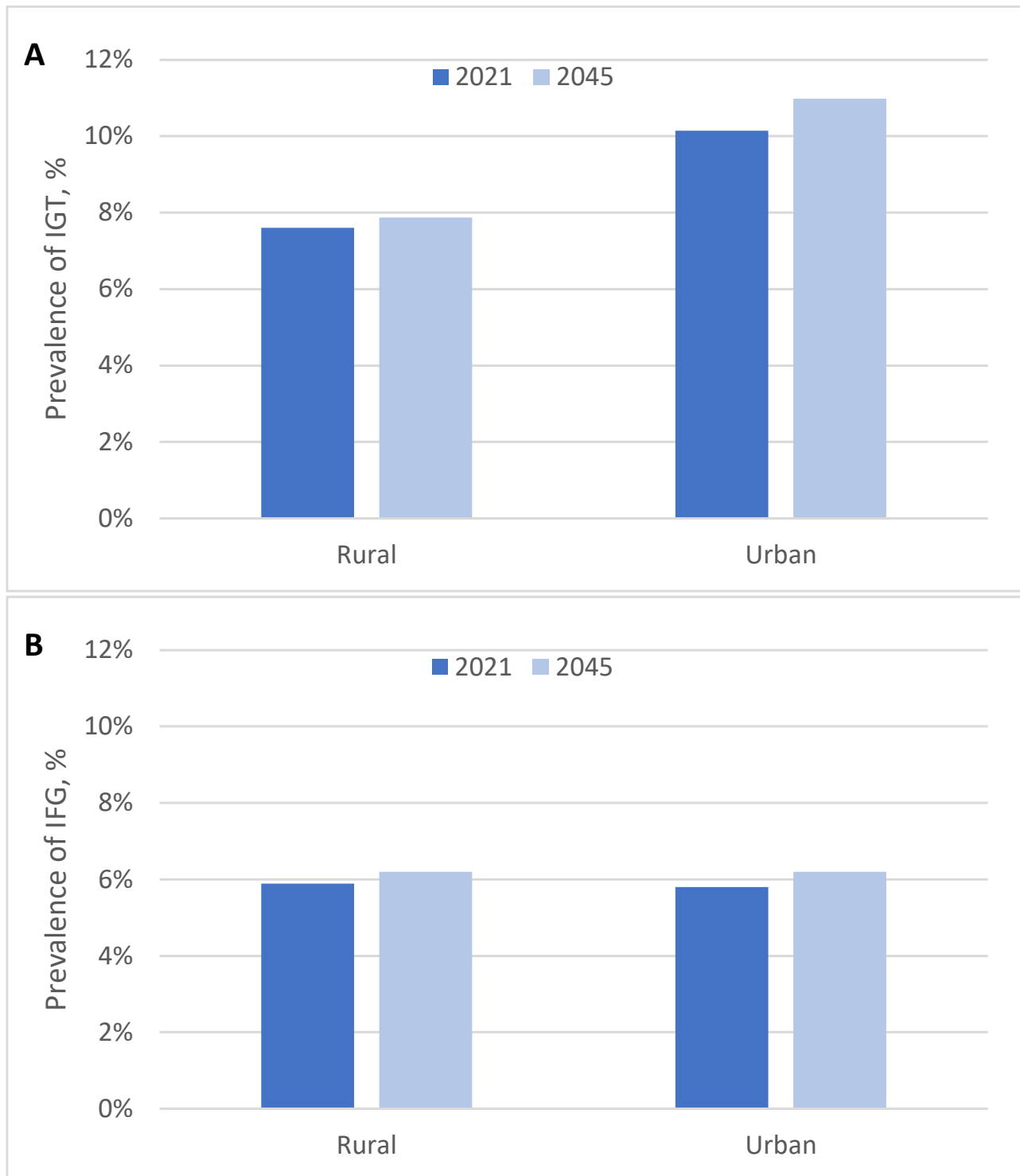
Abbreviations: IDF, International Diabetes Federation; IGT, impaired glucose tolerance; IFG, impaired fasting glucose; HIC, high-income country; UMIC, upper-middle-income country; LMIC, lower-middle-income country; LIC, low-income country; AFR: Africa; EUR: Europe; MENA: Middle East and North Africa; NAC: North America and Caribbean; SACA: South and Central America; SEA: South-East Asia; WP: Western Pacific

*Age adjustment based on United Nations age distribution data for each country

Supplemental Figure 1: Prevalence of impaired glucose tolerance (Panel A) and impaired fasting glucose (Panel B) in adults aged 20-79 years in 2021 and 2045, by sex



Supplemental Figure 2: Prevalence of impaired glucose tolerance (Panel A) and impaired fasting glucose (Panel B) in adults aged 20-79 years in 2021 and 2045, by setting



Appendix

Search terms: (((MH "Glucose Intolerance") OR (MH "Glucose Tolerance Test") OR (MH "Glycated Hemoglobin A") OR (MH "Blood Glucose") OR AB glucose intolerance OR TI glucose intolerance OR AB glucose tolerance OR TI glucose tolerance OR AB glucose tolerance test OR TI glucose tolerance test OR AB impaired glucose tolerance OR TI impaired glucose tolerance OR AB impaired glucose OR TI impaired glucose OR AB igt OR TI igt OR AB prediabetes OR TI prediabetes OR AB pre-diabetes OR TI pre-diabetes OR AB glucose OR TI glucose OR AB impaired fasting glucose OR TI impaired fasting glucose OR AB glycated hemoglobin OR TI glycated hemoglobin OR AB a1c OR TI a1c OR AB hba1c OR TI hba1c OR AB fasting plasma glucose OR TI fasting plasma glucose) **AND** ((MH "Prevalence") OR AB prevalence OR TI prevalence OR AB prevalen* OR TI prevalen* OR AB epidemiology OR TI epidemiology OR AB statistics OR TI statistics OR AB screen* OR TI screen*)) **NOT** (AB animal OR TI animal OR AB animals OR TI animals OR AB rat OR TI rat OR AB rats OR TI rats OR AB mice OR TI mice OR AB mouse OR TI mouse OR AB monkey OR TI monkey OR AB monkeys OR TI monkeys OR AB trial OR TI trial OR AB trials OR TI trials OR AB case-control OR TI case-control OR AB case control OR TI case control OR AB case series OR TI case series OR TI case report OR AB genetic OR TI genetic OR AB editorial OR TI editorial OR AB covid-19 OR TI covid-19 OR AB coronavirus OR TI coronavirus OR TI hospital OR AB type 1 diabetes OR TI type 1 diabetes OR AB type i diabetes OR TI type i diabetes)