

Figure S1. Rates of hospitalization for acute myocardial infarction (A), stroke (B), congestive heart failure (C) and lower extremity amputation (D) among people with diagnosed diabetes, 1995 to 2019, stratified by sex.

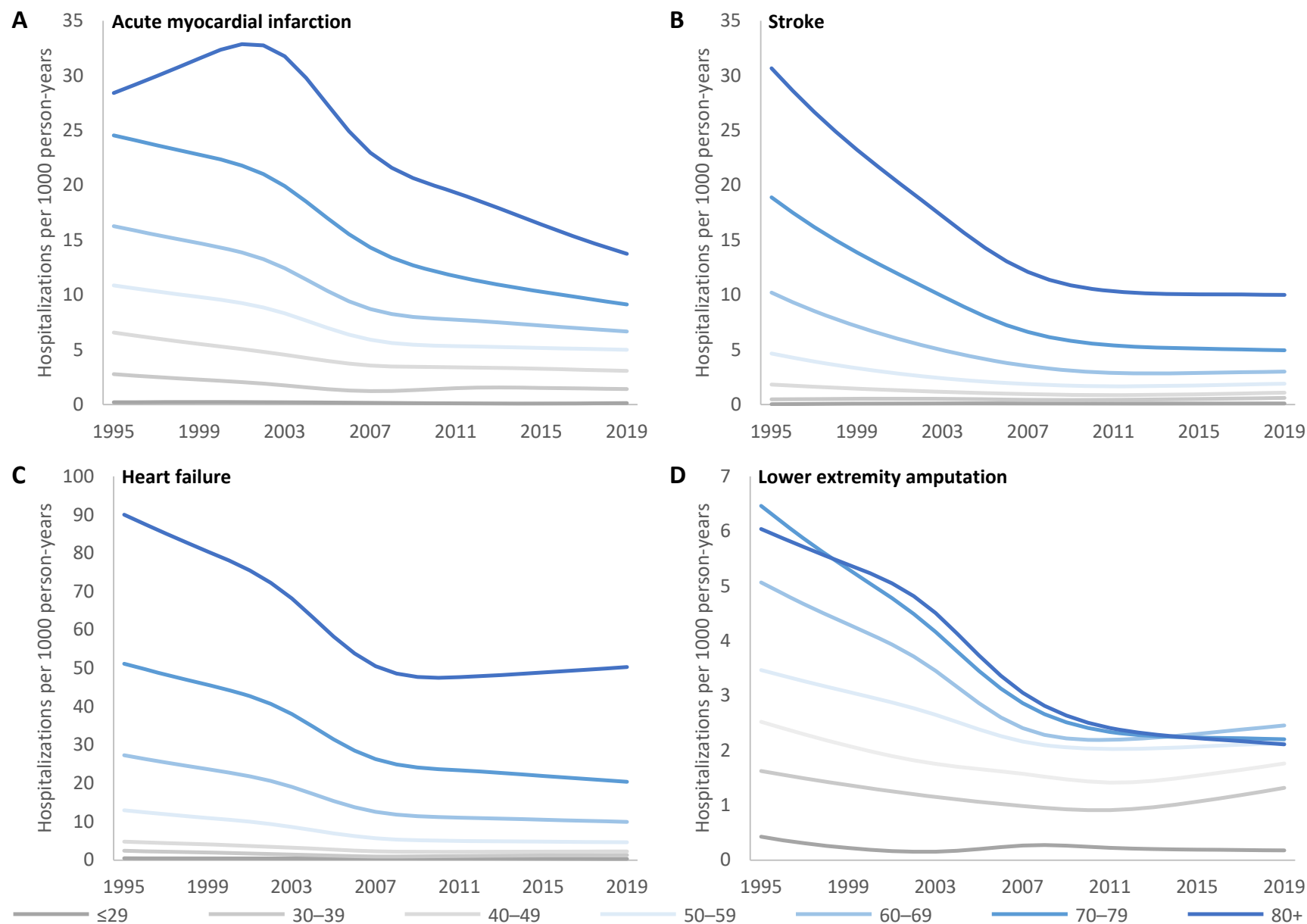


Figure S2. Rates of hospitalization for acute myocardial infarction (A), stroke (B), congestive heart failure (C) and lower extremity amputation (D) among people with diagnosed diabetes, 1995 to 2019, stratified by age.

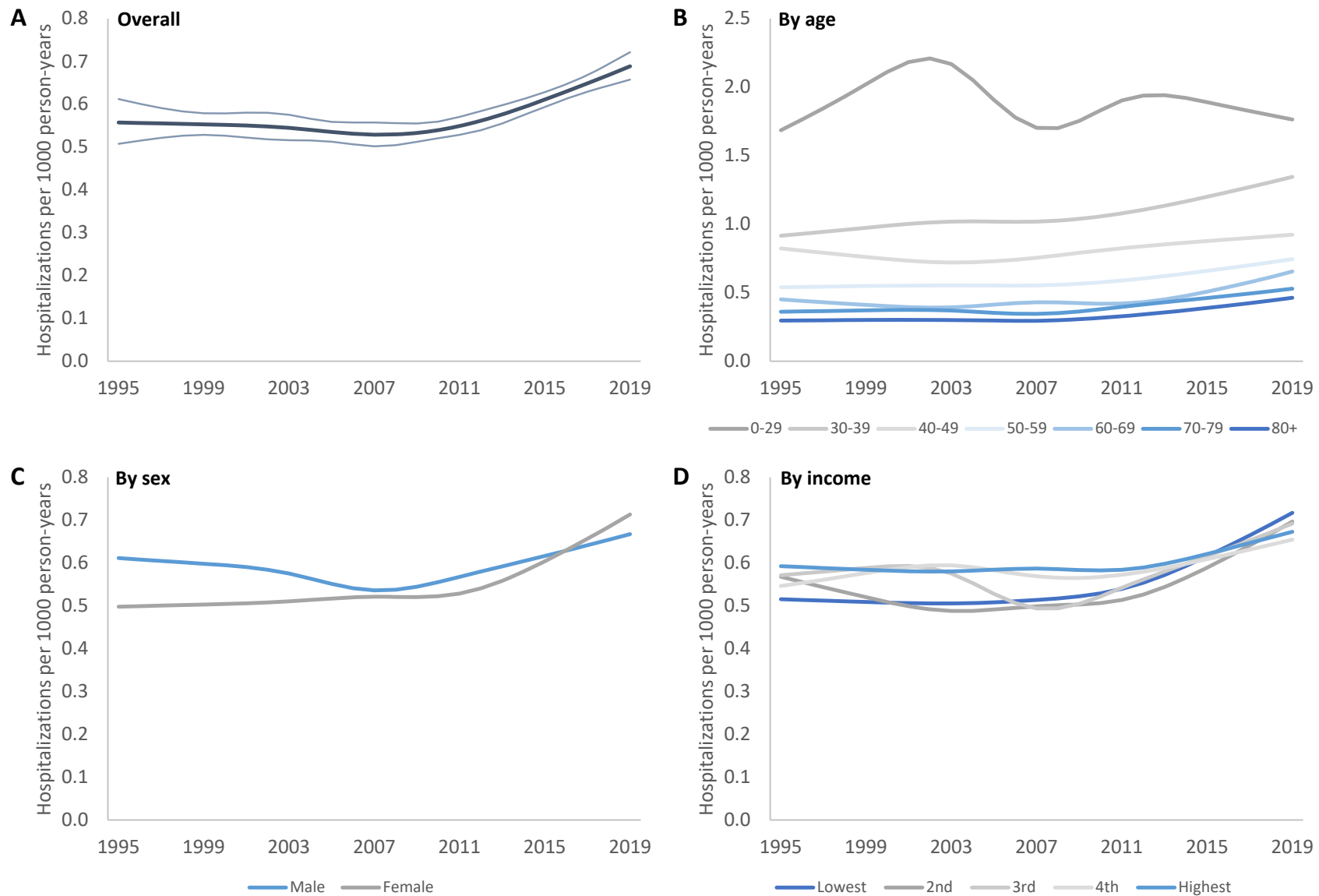


Figure S3. Rates of hospitalization for acute appendicitis among people with diagnosed diabetes, 1995 to 2019, overall with 95% confidence interval (A), stratified by age (B), stratified by sex (C) and stratified by income (D).