

Supplemental Table 1: Comparison of the samples at four fundus measurements (DPPOS year 01/05/11/16) as well as the full DPP cohort. Categorical variables are described as number of events (%), and continuous variables are described as mean (SD) and median (IQR). P-values are calculated using Pearson's Chi-square test or ANOVA comparing the samples at the four time points.

	Full	Y01	Y05	Y11	Y16	p-value
<i>Sample size</i>	3234	899	2128	2086	1563	
<i>NHW</i>	1768 (54.7%)	482 (53.6%)	1138 (53.5%)	1090 (52.3%)	779 (49.8%)	
<i>African American</i>	645 (19.9%)	197 (21.9%)	425 (20.0%)	429 (20.6%)	325 (20.8%)	
<i>Hispanic</i>	508 (15.7%)	164 (18.2%)	336 (15.8%)	326 (15.6%)	261 (16.7%)	<.0001
<i>Asian</i>	142 (4.4%)	44 (4.9%)	102 (4.8%)	105 (5.0%)	78 (5.0%)	
<i>American Indian</i>	171 (5.3%)	12 (1.3%)	127 (6.0%)	136 (6.5%)	120 (7.7%)	
<i>Male</i>	1043 (32.3%)	319 (35.5%)	693 (32.6%)	653 (31.3%)	452 (28.9%)	
<i>Female</i>	2191 (67.7%)	580 (64.5%)	1435 (67.4%)	1433 (68.7%)	1111 (71.1%)	0.013
<i>ILS</i>	1079 (33.4%)	248 (27.6%)	698 (32.8%)	678 (32.5%)	500 (32.0%)	
<i>MET</i>	1073 (33.2%)	306 (34.0%)	712 (33.5%)	703 (33.7%)	541 (34.6%)	0.0863
<i>PLB</i>	1082 (33.5%)	345 (38.4%)	718 (33.7%)	705 (33.8%)	522 (33.4%)	
<i>NGR</i>	674 (26.9%)	112 (13.1%)	545 (27.7%)	513 (26.5%)	340 (23.8%)	
<i>IGT</i>	134 (5.4%)	25 (2.9%)	93 (4.7%)	86 (4.4%)	62 (4.3%)	0.1094 [†]
<i>T2D</i>	1696 (67.7%)	721 (84.0%)	1326 (67.5%)	1337 (69.1%)	1026 (71.8%)	
<i>Never smoking</i>	1897 (58.7%)	510 (56.7%)	1269 (59.6%)	1268 (60.8%)	980 (62.7%)	
<i>Current smoker</i>	226 (7.0%)	69 (7.7%)	133 (6.3%)	121 (5.8%)	87 (5.6%)	0.0611
<i>Previous smoker</i>	1111 (34.4%)	320 (35.6%)	726 (34.1%)	697 (33.4%)	496 (31.7%)	
<i>Ever hypertension in follow-up</i>	2175 (86.6%)	800 (90.5%)	1833 (87.4%)	1815 (88.1%)	1365 (88.0%)	0.0402
<i>Hypertension at baseline</i>	679 (40.8%)	228 (47.0%)	448 (39.5%)	404 (37.4%)	273 (34.2%)	<.0001
<i>Ever elevated lipid in follow-up</i>	2042 (80.0%)	744 (83.1%)	1723 (81.2%)	1715 (82.5%)	1302 (83.4%)	0.0401
<i>Elevated lipid at baseline</i>	1138 (35.2%)	324 (36.0%)	770 (36.2%)	747 (35.8%)	543 (34.7%)	0.8846
<i>Gestational diabetes</i>	353 (16.1%)	102 (17.6%)	221 (15.4%)	229 (16.0%)	192 (17.3%)	0.6505
<i>Ever pregnant</i>	1869 (85.3%)	494 (85.2%)	1227 (85.5%)	1224 (85.4%)	960 (86.4%)	0.9303

Age at randomization	50.61 (10.68)	51.61 (10.12)	51.34 (9.95)	50.38 (9.65)	48.96 (8.99)	<.0001
Average HbA1c (%)	6.05 (0.71)	6.28 (0.81)	6.06 (0.71)	6.07 (0.73)	6.09 (0.75)	<.0001
Average fasting glucose (mg/dl)	113.9 (17.98)	120.9 (21.23)	114.0 (17.77)	114.6 (18.22)	114.8 (18.23)	<.0001
Average 2-hour glucose (mg/dl)	162.8 (29.76)	174.9 (31.35)	162.7 (29.66)	163.0 (29.58)	163.0 (29.99)	<.0001
Average weight (kg)	91.54 (19.62)	93.37 (20.53)	91.25 (19.25)	91.12 (19.03)	90.84 (18.30)	0.0809
Average SBP (mmHg)	121.7 (9.72)	122.7 (9.88)	121.6 (9.61)	121.4 (9.47)	120.7 (9.22)	<.0001
Average DBP (mmHg)	74.03 (6.33)	74.22 (6.55)	73.82 (6.31)	73.74 (6.16)	73.86 (6.15)	0.4986
1/Insulin _{fasting}	0.05 (0.03)	0.05 (0.03)	0.05 (0.03)	0.05 (0.03)	0.05 (0.03)	0.0062
ODI _{baseline} *	3831 (5280)	3706 (4991)	3776 (5496)	3788 (5504)	3770 (5269)	0.9464
	2409	2400	2332	2389	2389	
	(1186- 4747)	(1151- 4536)	(1153- 4701)	(1180- 4717)	(1219- 4649)	
HbA1c (%) _{baseline}	5.91 (0.50)	6.01 (0.52)	5.92 (0.49)	5.92 (0.50)	5.90 (0.49)	<.0001
Weight (kg) _{baseline}	94.23 (20.26)	95.22 (20.37)	93.22 (19.27)	93.05 (19.22)	92.65 (18.60)	0.0243
Systolic BP (mm Hg) _{baseline}	123.7 (14.69)	125.1 (15.06)	123.2 (14.44)	122.8 (14.56)	121.7 (13.82)	<.0001
Diastolic BP (mm Hg) _{baseline}	78.30 (9.29)	78.61 (9.62)	78.03 (9.30)	78.13 (9.28)	78.10 (9.28)	0.493
BMI (kg/m ²) _{baseline}	33.97 (6.69)	34.21 (6.70)	33.62 (6.36)	33.62 (6.39)	33.65 (6.28)	0.155
Adiponectin (ug/mL) _{baseline}	7.93 (3.47)	7.65 (3.31)	8.03 (3.55)	7.96 (3.45)	7.82 (3.22)	0.0717
CIR _{baseline}	0.63 (0.43)	0.57 (0.37)	0.63 (0.43)	0.63 (0.43)	0.64 (0.43)	0.0001
Fasting glucose (mg/dL) _{baseline}	106.5 (8.32)	109.3 (9.12)	106.5 (8.37)	106.4 (8.39)	106.0 (8.34)	<.0001
120-minute glucose (mg/dL) _{baseline}	164.6 (17.04)	168.1 (17.39)	164.5 (17.01)	164.6 (17.03)	164.6 (16.92)	<.0001
HOMA B-cell _{baseline} *	225.7 (128.4)	225.8 (123.5)	224.6 (129.3)	223.9 (127.8)	225.4 (128.2)	0.9506
	202.5	205.1	201.8	201.9	203.5	
	(138.0-279.7)	(138.8-286.1)	(136.6-279.1)	(137.1-277.0)	(142.5-277.6)	
HOMA IR _{baseline} *	7.08 (4.19)	7.70 (4.43)	7.04 (4.17)	6.98 (4.12)	6.93 (4.01)	<.0001
	6.16 (4.22- 8.85)	6.80 (4.61- 9.76)	6.10 (4.19-8.79)	6.04 (4.19- 8.79)	6.04 (4.24- 8.76)	
I30-I0/G30-G0 in (uU/mg) _{baseline} *	124.3 (92.89)	112.5 (79.83)	122.7 (92.23)	123.7 (91.92)	124.4 (91.22)	0.0031
	104.0	93.50	102.3	104.3	103.7	
	(66.70-157.6)	(62.70-141.3)	(66.70-157.1)	(67.10-157.6)	(67.90-160.0)	
ACR(mg/g) _{baseline} *	13.91 (50.38)	15.64 (51.09)	13.61 (54.37)	14.27 (56.40)	14.44 (60.11)	0.9032

	5.51 (3.74- 9.74)	5.40 (3.75- 9.64)	5.43 (3.74- 9.49)	5.44 (3.73- 9.48)	5.41(3.73- 9.41)	
hsCRP (mg/dL)_baseline*	0.59 (0.74)	0.59 (0.75)	0.157 (0.69)	0.59 (0.75)	0.60 (0.72)	0.9033
	0.37 (0.17- 0.76)	0.37 (0.17- 0.76)	0.36 (0.17- 0.73)	0.36 (0.17- 0.74)	0.37(0.17- 0.76)	
HDL-c (mg/dL) baseline	45.61 (11.78)	45.09 (11.47)	46.01 (12.18)	45.91 (12.04)	45.89 (11.79)	0.5343
Total cholesterol (mg/dL)_baseline	203.1 (36.36)	204.2 (34.96)	203.5 (35.68)	203.8 (35.65)	202.9 (34.73)	0.67
LDL-c (mg/dL)_baseline	124.6 (32.85)	125.5 (32.66)	124.7 (32.50)	124.9 (32.38)	124.3 (31.63)	0.8892
Triglycerides (mg/dL) _ baseline*	163.4 (95.86)	167.6 (95.56)	163.5 (96.82)	164.0 (96.95)	163.2 (99.20)	0.6617
	141 (99-201)	145 (103-204)	142 (99-201)	142 (99-203)	141 (98-199)	
Duration (years) of T2D	6.77 (6.96)	10.46 (7.16)	7.02 (7.05)	7.52 (7.13)	8.32 (7.54)	<0.0001

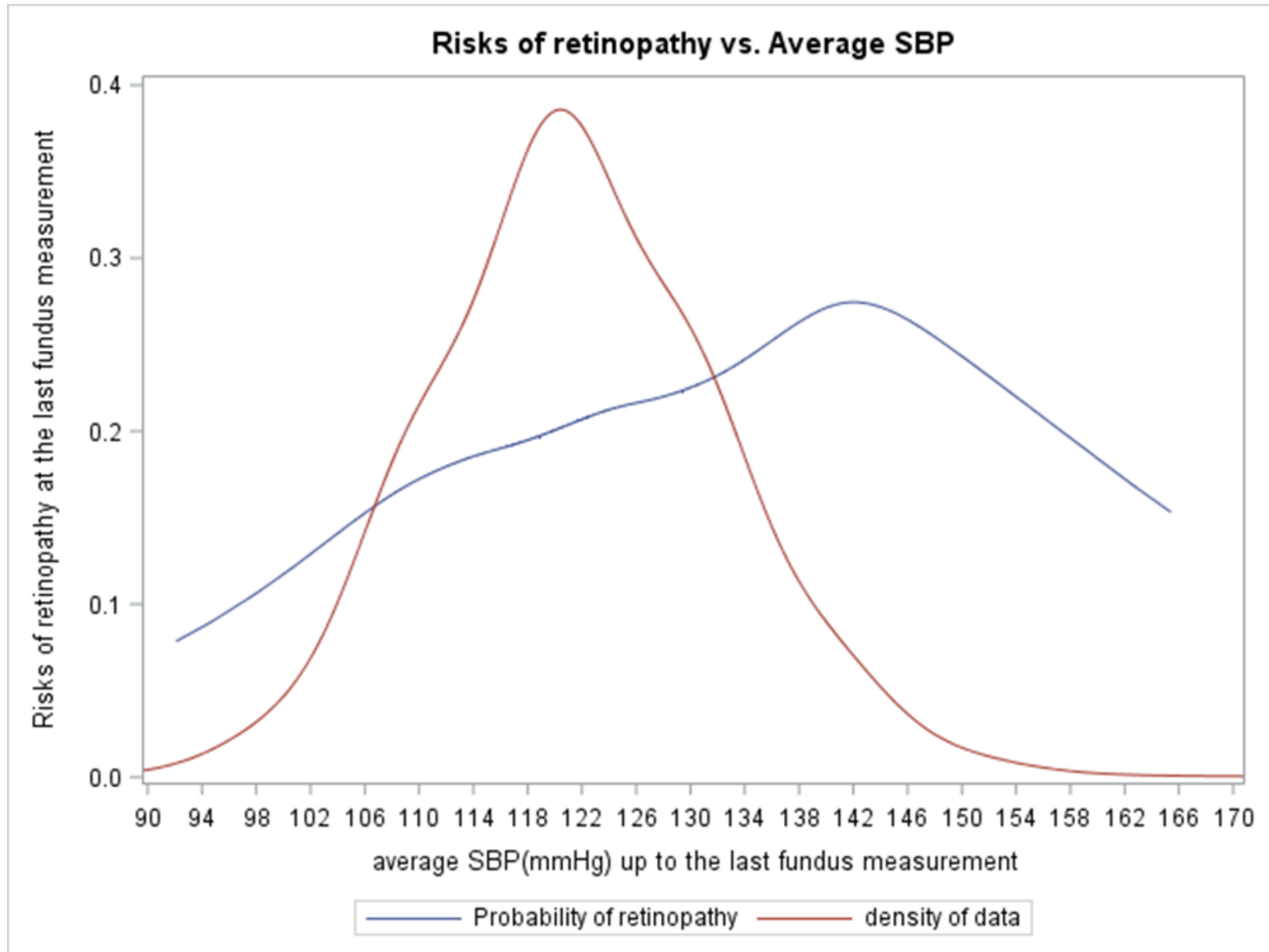
Categorical variables are number (%). Continuous variable are mean (SD) and, where indicated, median (IQR). Average values refers to the average of repeated measurements from the same participant during followup. Baseline values refer to the first measurement at beginning of DPP.

† p-value for years 5, 11 and 16 only; by design, more participants with T2D were selected for fundus photography at DPPOS year 1.

* The first row reports mean (SD) values and the second row reports median (IQR).

Supplemental Figure 1: Prevalence of retinopathy at DPPOS year 16 by average systolic (SBP) (1A) and diastolic (DBP) (1B) blood pressure during followup. The blue line represents prevalence of retinopathy and the orange line represents the density of data over the range of average SBP or DBP.

1A



1B

